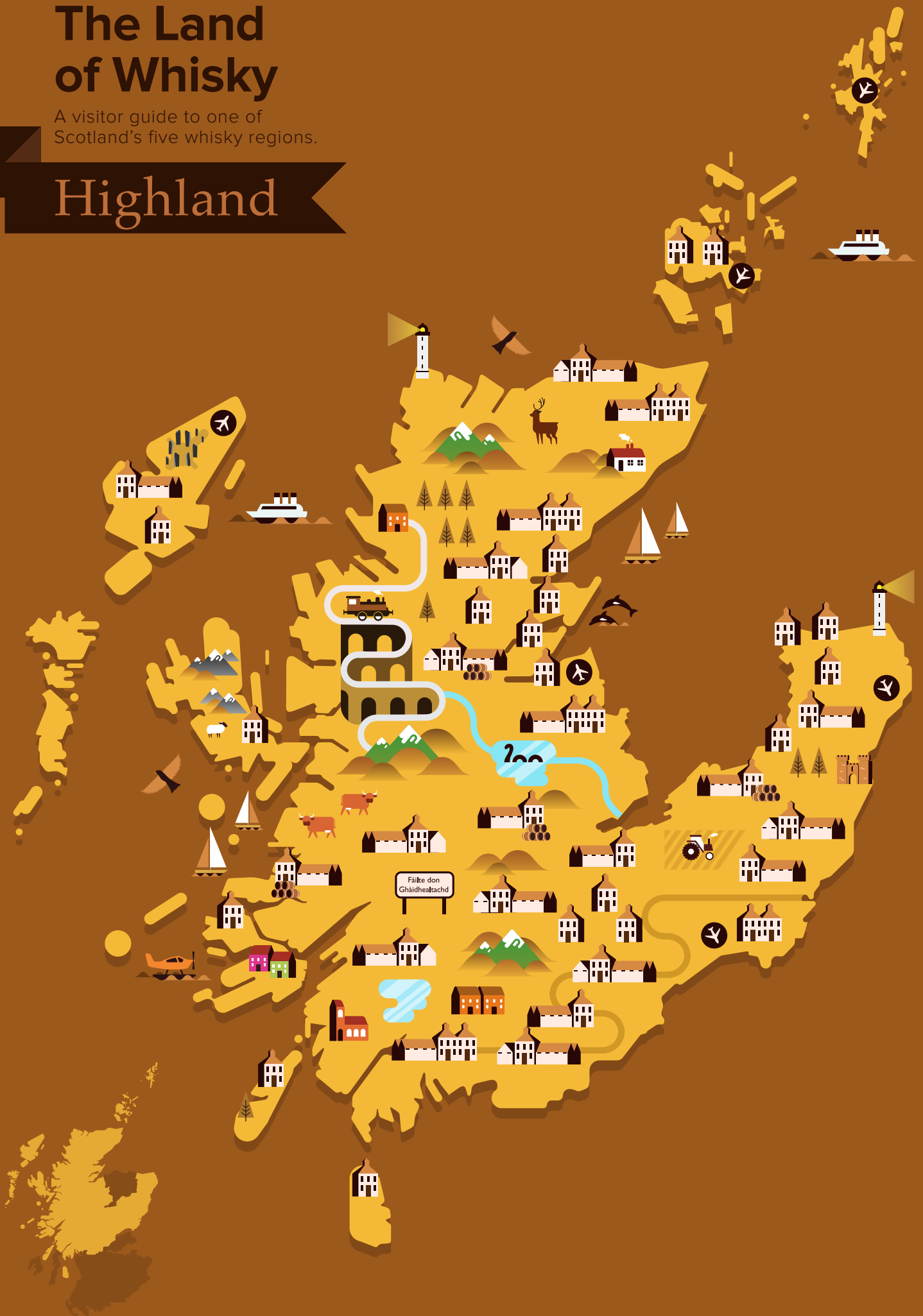


A visitor guide to one of  
Scotland's five whisky regions.

A visitor guide to one of  
Scotland's five whisky regions.

# Highland



# Whisky

The practice of distilling *whisky* has been lovingly perfected throughout Scotland for centuries and began as a way of turning rain-soaked barley into a drinkable spirit, using the fresh water from Scotland's crystal-clear springs, streams and burns.

To this day, distilleries across the country continue the tradition of using pure spring water from the same sources that have been used for centuries.

From the source of the water and the shape of the still to the wood of the cask used to mature the spirit, there are many factors that make Scotch whisky so wonderfully different and varied from distillery to distillery.

No two are the same; each has its own proud heritage, unique setting and its own way of doing things that has evolved and been refined over time. Paying a visit to a distillery lets you discover more about the environment and the people who shape the taste of the Scotch whisky you enjoy. So, when you're sitting back and relaxing with a dram of our most famous export at the end of your distillery tour, you'll be appreciating the essence of Scotland as it swirls in your glass.

Home to the greatest concentration of distilleries in the world, Scotland is divided into five distinct *whisky regions*. These are Highland, Lowland, Speyside, Islay and Campbeltown.

Find out more information about whisky, how it's made, what foods to pair it with and more:

**[www.visitscotland.com/whisky](http://www.visitscotland.com/whisky)**

For more information on travelling in Scotland:

**[www.visitscotland.com/travel](http://www.visitscotland.com/travel)**

Search and book accommodation:

**[www.visitscotland.com/accommodation](http://www.visitscotland.com/accommodation)**





01 SCAPA  
02 HIGHLAND PARK  
03 WOLFBURN  
04 PULTENEY  
05 ABHAINN DEARG  
06 ISLE OF HARRIS  
07 CLYNELISH  
08 GLENMORANGIE  
09 BALBLAIR  
10 INVERGORDON  
11 DALMORE  
12 TEANINICH  
13 GLEN ORD  
14 ROYAL BRACKLA  
15 TALISKER  
16 TOMATIN  
17 GLENGLOSSAUGH  
18 MACDUFF  
19 GLENDRONACH  
20 GLEN GARIOCH  
21 ARDMORE  
22 ROYAL LOCHNAGAR  
23 DALWHINNIE  
24 BEN NEVIS  
25 BLAIR ATHOL  
26 FETTERCAIRN  
27 GLENCADAM  
28 ARBIE  
29 STRATHEARN  
30 EDRADOUR  
31 GLENTURRET  
32 ABERFELDY  
33 ARDNAMURCHAN  
34 TOBERMORY  
35 OBAN  
36 TULLIBARDINE  
37 DEANSTON  
38 GLENGOYNE  
39 LOCH LOMOND  
40 ISLE OF JURA  
41 ISLE OF ARRAN

If we contrast the compass points, distilleries in the northern Highlands generally produce whisky with full-bodied, sweet

Browse the listings in this guide to find out more information about the distilleries in the Highland region, how to visit them or simply which of their drams to sample.

- 01 SCAPA
- 02 HIGHLAND PARK
- 03 WOLFBURN
- 04 PULTENEY
- 05 ABHAINN DEARG
- 06 ISLE OF HARRIS
- 07 CLYNELISH
- 08 GLENMORANGIE
- 09 BALBLAIR
- 10 INVERGORDON
- 11 DALMORE
- 12 TEANINICH
- 13 GLEN ORD
- 14 ROYAL BRACKLA
- 15 TALISKER
- 16 TOMATIN
- 17 GLENGLOSSAUGH
- 18 MACDUFF
- 19 GLENDRONACH
- 20 GLEN GARIOCH
- 21 ARDMORE
- 22 ROYAL LOCHNAGAR
- 23 DALWHINNIE
- 24 BEN NEVIS
- 25 BLAIR ATHOL
- 26 FETTERCAIRN
- 27 GLENCADAM
- 28 ARBIEKIE
- 29 STRATHEARN
- 30 EDRADOUR
- 31 GLENTURRET
- 32 ABERFELDY
- 33 ARDNAMURCHAN
- 34 TOBERMORY
- 35 OBAN
- 36 TULLIBARDINE
- 37 DEANSTON
- 38 GLENGOYNE
- 39 LOCH LOMOND
- 40 ISLE OF JURA
- 41 ISLE OF ARRAN

[www.visitscotland.com/distilleries-guides](http://www.visitscotland.com/distilleries-guides)



# Abhainn Dearg Distillery

Tours available

## LOCATION

Carnish, Isle of Lewis

## HOW TO GET THERE

The distillery is situated in Uig, a remote western part of the Isle of Lewis. As such, you should expect to drive single-track roads to the distillery in Carnish. The distillery itself is situated along a laneway next to a bridge.

## OVERVIEW

As the first distillery on the Outer Hebrides in nearly 200 years, Abhainn Dearg Distillery (pronounced ‘aveen jerræk’) is somewhat of a trailblazer on the archipelago. The distillery is named after the Gaelic for Red River, the burn that runs through the surrounding valley and the water source for its whisky.

A small operation which churns out batches of mature Scotch whisky, the distillery itself is not typical of Scottish distilleries from the outside or inside. While many distilleries have converted to modern machinery and technology, each stage of the distillation process at Abhainn Dearg is still done by hand; from filtering the new-make spirit to labelling and bottling the aged whisky.

## OPENING TIMES

The distillery is open all year round except Sundays. Also, opening times vary depending on season. In summer, it is open to visitors Monday to Saturday and Monday to Friday in winter.

## SAMPLE

- The Spirit of Lewis
- Single Malt Special Edition

## WHERE TO BUY

Available to purchase at the distillery shop or online from its website and other reputable online retailers.

## OTHER NEARBY ATTRACTIONS

- *Calanais Standing Stones*
- *Doune Broch*
- *Bosta Iron Age House*
- *Gearrannan Blackhouse Village*
- *Isle of Harris Distillery (opening spring 2015)*

# Aberfeldy Distillery

(Dewar’s World of Whisky)

Tours available

## LOCATION

Aberfeldy, Perthshire

## HOW TO GET THERE

Aberfeldy Distillery can be found on the left-hand side of the A827 before you reach Aberfeldy, when travelling west from the Ballinluig junction of the A9.

## OVERVIEW

The Dewar family started what has become the bestselling blended Scotch in the United States over 160 years ago. Not far from where founder John Dewar was born, the distillery sprung up along the River Tay near waters which were always used as a place to go panning for gold.

As well as fine and complex single malts, the majority of whisky made at Aberfeldy has been used in Dewar’s renowned blended whiskies. White Label, created in 1899 by master blender AJ Cameron, is Dewar’s most famous blended whisky. A huge success, it was exported around the world for over a century and is known for its slogan, “It never varies.”

The complex business of blending whisky has been passed down through the generations at Dewar’s. The distillery itself forms part of the Dewar’s World of Whisky attraction, one of Scotland’s best and most visited whisky heritage visitor centres. The interactive exhibitions take you through the history of Dewar’s Whisky as well as the fine art of blending before a tour of the distillery.

## OPENING TIMES

Open all year around, except Christmas and New Year’s Day.

## SAMPLE

- Dewar’s White Label (blend)
- Dewar’s 12 Year Old (blend)
- Dewar’s 18 Year Old Double Aged (blend)
- Dewar’s Signature (blend)
- Aberfeldy 12 Year Old
- Aberfeldy 21 Year Old

## WHERE TO BUY

Available at most major retailers and online.

## OTHER NEARBY ATTRACTIONS

- *Edradour Distillery*
- *The Queen’s View, Loch Tummel*
- *Falls of Bruar*
- *Scone Palace*
- *Perth*
- *Blair Castle*
- *The Scottish Crannog Centre*
- *The Hermitage*

Abhainn Dearg Distillery

The peaceful countryside near Aberfeldy





# Arbikie Distillery

## LOCATION

Inverkeilor, near Arbroath, Angus.

## OVERVIEW

Storming into the drinks market with the first potato vodka in Scotland, Arbikie Distillery in Angus is launching two more drinks to its name – gin and, most importantly, whisky.

Based on the Arbikie Highland Estate in a converted cow shed, the distillery overlooks Lunan Bay and uses traditional distilling techniques which were used on this land as far back as 1794.

While the main component for the vodka is estate’s potatoes and the gin is created with home-grown wheat, the whisky uses Arbikie barley, harvested less than 10 miles from the stills.

The whisky, vodka and gin all use water sourced from the Angus Glens which has filtered down through the fertile lands and into an underground lagoon. They are all made using the same copper stills, to help create a distinctive taste which will reflect both the coastal and country surroundings that they are made in.

Taste the first new whisky in Angus for a generation which, once distilled into ex-bourbon and ex-sherry casks to mature, will have a Highland edge with a rich deep flavour and honeyed tones.

**Not open to the public.**

## SAMPLE

*Early releases are now available*

## OTHER NEARBY ATTRACTIONS

- *Lunan Bay*
- *Montrose Basin Visitor Centre*
- *Duninnald Castle and Gardens*
- *Gordon’s*
- *Arbroath Smokie Trail*
- *Montrose Golf Courses*

# Ardmore Distillery

## LOCATION

Kennethmont, Huntly, Aberdeenshire.

## OVERVIEW

Ardmore Distillery was opened in 1899 in order to guarantee a supply of fully peated single malt whisky for Teacher’s Scotch whisky. Unlike most other Highland distilleries, Ardmore Distillery use peated barley, which gives the whisky a delicious smoky finish.

Although the distillery is not open to the public, you can still try a taste of Teacher’s Scotch whisky or Ardmore single malt, bottles of which are released from time to time.

**Not open to the public**

## SAMPLE

- Ardmore Legacy
- Ardmore Traditional Cask
- Teacher’s Scotch whisky

## WHERE TO BUY

Bottles of Teacher’s can be found via most major retailers and bottles of Ardmore single malt can be bought online.

## OTHER NEARBY ATTRACTIONS

- *Huntly Castle*
- *Deans of Huntly*
- *Knock Dhu Distillery*
- *Glendronach Distillery*
- *Glen Garioch Distillery*

# Ardnamurchan Distillery

**Tours available**

## LOCATION

Glenbeg, Ardnamurchan

## HOW TO GET THERE

Travel time from the Corran Ferry is about 1 hour, and from Kilchoan (if you’re coming via Mull) is about 45 minutes.

## OVERVIEW

Opened in July 2014, Ardnamurchan Distillery is one of Scotland’s newest distilleries. Located on the Ardnamurchan peninsula, amidst stunning scenery on the shores of Loch Sunart, it is also the most westerly distillery on mainland Scotland. Eventually, the distillery will produce two different types of whisky, one peated and the other unpeated.

Tour this new distillery to see the making of their single malt as it happens. Each tour is finished with a whisky tasting in the comfortable tasting room, with whisky sourced by parent company Adelphi Selection.

## OPENING TIMES

10am – 6pm.

## OTHER NEARBY ATTRACTIONS

- *Tobermory Distillery, Isle of Mull*
- *Ben Nevis Distillery, Fort William*
- *Loch Shiel Cruises*
- *Wild Highland Tours*
- *Staffa Tours*
- *Nadurra Visitor Centre*

Ardnamurchan Lighthouse





# Balblair Distillery

Tours available

## LOCATION

Edderton, near Tain.

## HOW TO GET THERE

Balblair Distillery is located in the village of Edderton near Tain in the north eastern Highlands. Edderton can be reached by bus and Tain is accessible by train, bus and car. Both feature on a number of cycle routes.

## OVERVIEW

Discover the uniqueness of Balblair Distillery, the only distillery to exclusively release vintage bottlings. Once judged by the manager to have reached peak condition in the cask, Balblair whisky is labelled with the year it was made, rather than by its age, and seen to hold the essence of that year in the bottle.

One of the oldest working distilleries in Scotland, it was established by John Ross of Clan Ross and has stood by the Dornoch Firth in the eastern Highlands for over 200 years. The buildings that you see today were built in the early 20th century and were used by the army in World War II.

With a classic pagoda and rustic buildings in a lush green landscape, Balblair Distillery was understandably chosen as one of the locations for Ken Loach’s film *The Angel’s Share*, which was released in 2012.

See if you can recognise the distinctive taste of Balblair whiskies, which are said to reflect apricots, oranges, spices, floral notes and green apples as well as having a leathery, nutty and full-bodied character.



The oldest to be released in the current collection is the 1969 Vintage which is said to carry an aromatic and spicy aroma with fragrant and floral hints of lemons, apples bananas, pear drops and toffee.

Step into the visitor centre’s ‘time capsule’ experience to be taken back to the sights and sounds of the year in which certain whiskies were distilled before sampling a vintage Balblair and continuing your intimate distillery tour. There are three types of tour to choose from, ranging from a shorter tour with one sample to an in-depth manager’s tour.

## OPENING TIMES

10am – 4pm.

From 1 April – 30 September open for tours at weekends.

## SAMPLE

- Balblair Vintage 2003

## WHERE TO BUY

Balblair Distillery’s whisky shop and online website includes rare and exclusive vintages. You can even select a cask and bottle your own before writing the label and sealing the cork. Other whisky shops also stock it.

## OTHER NEARBY ATTRACTIONS

- *Highland Pictish Trail*
- *Glenmorangie Distillery*
- *Dornoch Beach*
- *Tarbat Discovery Centre*
- *The National Nature Reserve of Loch Fleet*

*Looking over Loch Linnhe to Fort William*

# Ben Nevis Distillery

Tours available

## LOCATION

Near Fort William.

## HOW TO GET THERE

Based on the outskirts of Fort William, Ben Nevis Distillery is close to the foot of Ben Nevis mountain itself. Fort William can be accessed by bus and train and is located on the A82.

## OVERVIEW

A distillery as renowned for its blends as its single malts, Ben Nevis Distillery was established in 1825 and sourced both its peat and water from the mountain it is named after.

In the shadow of the UK’s highest mountain you’ll find the Legend of the Dew Ben Nevis Visitor Centre,

a welcoming distillery for adults and children alike.

Meet the mythical giant Hector McDram in the former warehouse and bottling hall and find out about the distillery’s history. Ben Nevis Distillery was the first to produce whisky from both grain and malt at the same time, but these days it has returned to only using malt.

Try a dram of this weighty whisky which is made with combined malts for a deep, complex taste. Sample the ten-year-old single malt to taste soft oils, citrus notes and oak as well as hints of bitter roast coffee.

After meeting Hector McDram you can tour the distillery with a helpful guide, enjoy a dram and perhaps even stop by the coffee shop and restaurant. For a more in-depth experience, join the executive tour which is followed with several tastings in board room.

## OPENING TIMES

Generally open weekdays 9am – 5pm. Check website for full details.

## SAMPLE

- Ben Nevis 10 Year Old single west Highland Single Malt
- Dew of Ben Nevis 12 Years Old Deluxe Blend
- Dew of Ben Nevis Blue Label Blend

## WHERE TO BUY

Whisky shops and online

## OTHER NEARBY ATTRACTIONS

- *Grogg & Gruel Ale House and Restaurant*
- *Ben Nevis Mountain Range Cable Car*
- *Glenfinnan Monument & Visitor Centre*
- *The West Highland Museum*
- *Ardnamurchan Distillery*



### Did you know?

Water from the nearby Allt Dour burn is used in the Blair Athol 12 Year Old.

## Blair Athol Distillery

### Tours available

#### LOCATION

Pitlochry, Perthshire.

#### HOW TO GET THERE

You can get to Pitlochry from either north or south on the A9, or there is a train station in the town.

#### OVERVIEW

Since 1798, in the picturesque town of Pitlochry, Blair Athol Distillery has been producing one of the Scotland's most recognisable blends, Bell's blended Scotch whisky.

The unique flavour comes from the combination of many fine malt and grain whiskies. These are skilfully mixed together at the Blair Athol Distillery, and the winning recipe dates back to the 19th century. You'll taste an essence of nuts and spice in this blend from the malt at the heart of it, the Blair Athol 12 Year Old which is crafted in the distillery.

#### SAMPLE

- Blair Athol 12 Year Old
- Bell's Blended Scotch Whisky

#### WHERE TO BUY

You can buy the malt online, or visit the Blair Athol Distillery's shop.

#### OTHER NEARBY ATTRACTIONS

- *The Dewars Distillery*
- *Atholl Palace Museum*
- *Explorers Garden*
- *Edradour Distillery*
- *Pitlochry Festival Theatre*

## Clynelish Distillery

### Tours available

#### LOCATION

Brora, Sutherland.

#### HOW TO GET THERE

Situated in a small village on the east coast of Sutherland, Clynelish Distillery is located on the A9 an hour north of Inverness.

#### OVERVIEW

Clynelish Distillery was founded in 1819 by the Marquis of Stafford, later the notorious Duke of Sutherland, who was instrumental in the Highland Clearances which saw thousands of his tenants evicted to make way for sheep farming. It is said the distillery was calculated attempt by the ruthless Duke to make his barley profitable and undercut local moonshiners.

Clynelish Distillery overlooks the North Sea and boasts a backdrop of brooding hills. Its water source, the Clynmilton Burn, flows through these hills over fissures of gold in the rock, lending its single malt a fruity, waxy, faintly smoky flavour. Clynelish spirit was once so highly prized that it was produced exclusively for private customers, but today the robust, peaty-sweet character of Clynelish Single Malt Whisky is enjoyed around the world as one of the base spirits for the Johnnie Walker Gold Label.

There are three tours to choose from. The Clynelish Distillery Tour includes a guided tour of the distillery and a complimentary dram of Clynelish 14 year Old Single Malt, while the Taste of Clynelish offers bonus tastings of Clynelish Distillery Only Cask Strength Bottling and Johnnie Walker Gold Reserve.

Taste of the Highlands Tour offers a private extended tour of the facility along with tastings of Clynelish's signature malts as well as a sampling and tasting direct from the casks of Clynelish 1988 and Teaninich 1985. Advance booking is required.

#### OPENING TIMES

Opening times vary – please see website.

#### SAMPLE

- Clynelish 14 Year Old
- Clynelish Distillery Only Bottle 57.3%
- Clynelish Distillers Edition

#### WHERE TO BUY

Distillery shop, specialist merchants and online.

#### OTHER NEARBY ATTRACTIONS

- *Timespan Heritage and Art Centre*
- *Dunrobin Castle*
- *Brora Golf Course*
- *Royal Dornoch Golf Course*
- *Tain Golf Course*
- *Golspie Golf Course*
- *Glenmorangie Distillery*
- *Balblair Distillery*

*A whisky tasting at Blair Athol Distillery*

*The copper stills of the Clynelish Distillery*





# Dalmore Distillery

Tours available

## LOCATION

Alness, Ross-shire.

## HOW TO GET THERE

Dalmore Distillery is just a short 30 minute drive from Inverness, with regular buses running from Inverness to Alness.

## OVERVIEW

Owned by Clan Mackenzie for over a century, the iconic royal stag’s antlers that adorn every bottle of The Dalmore are taken directly from the Mackenzie family crest. The Dalmore Distillery has been producing full-bodied Highland malts since 1839; visit the distillery to discover the secrets behind their wonderfully rich and fruity Highland malts.

The Dalmore’s famous master distiller, Richard Paterson, has

won international renown for his exquisitely blended single malts. One of his creations, a bottle of Dalmore 62 reached a whopping £125,000 in auction in 2011 – the highest amount ever paid for a bottle of single malt at the time. Book a tour of this legendary distillery, picturesquely located on the shore of the Cromarty Firth, and learn about the art that goes into crafting their highly esteemed single malts.

## OPENING TIMES

Monday – Saturday. Morning, afternoon and evening timeslots available but book in advance.

## SAMPLE

- Dalmore 12 Year Old
- Dalmore 15 Year Old
- Dalmore 18 Year Old
- Cigar Malt Reserve
- King Alexander III

## WHERE TO BUY

Most major supermarkets and online.

## OTHER NEARBY ATTRACTIONS

- *Castle Leod*
- *Fyrish Monument, Alness*
- *Glenmorangie Distillery, Tain*
- *Glen Ord Distillery, Muir of Ord*
- *Balblair Distillery, Tain*

*The countryside around Dingwall, near the Dalmore Distillery*

# Dalwhinnie Distillery

Tours available

## LOCATION

Dalwhinnie, Cairngorms National Park.

## HOW TO GET THERE

Travel by car along the A9 or A89 or take the train to Dalwhinnie Station, which is just a short walk from the distillery.



## OVERVIEW

Set in a gloriously remote Highland location, at a towering 1,164 ft above sea level, Dalwhinnie Distillery is said to be Scotland’s highest distillery. Despite being surrounded by rugged mountains and wild Scottish landscape, the distillery’s striking white buildings produce a famously smooth and gentle spirit. Visit the distillery to see how Dalwhinnie craft their full-bodied malt whiskies, sample a dram and enjoy the sweet taste of honey and fruit, with a hint of Highland peat smoke.

As well as being one of the country’s highest distilleries, Dalwhinnie’s tours and whisky tastings are also decadently different. Not only will you be guided through the whisky-making process and given a sample, the distillery also pairs each of the delectable drams you’ll taste on your visit with a mouth-watering, handmade chocolate.

Go on the classic distillery tour, which costs £8.99 and is rounded off with a dram, a handmade chocolate and a free glass to take home, or opt for one of the bespoke whisky and chocolate tasting experiences, each with a free glass to take home too. Choose from three, four or six whisky tastings, paired with melt-in-the-mouth chocolates, and see how many of the different tasting notes in each of the Dalwhinnie expressions you can pick out.

Find your ideal style of whisky, all at one distillery, on the Classic Single Malt Whisky Tasting. Priced at £15.99, this unique tasting experience includes six single malts from six different distilleries throughout the country, including Dalwhinnie, Glenkinchie, Cragganmore, Talisker, Oban and Lagavulin, all paired with specially selected handmade chocolates.

## OPENING TIMES

Open 7 days a week though opening times vary. Tours can fill up quickly so pre-booking is advised.

## SAMPLE

- Dalwhinnie 15 Year Old
- Dalwhinnie Distillers Edition

## WHERE TO BUY

Most major retailers and online.

## OTHER NEARBY ATTRACTIONS

- *Blair Castle, Blair Atholl*
- *House of Bruar, by Blair Atholl*
- *Cairngorms National Park*
- *The Highland Chocolatier, Grandtully*
- *Ben Nevis Distillery*
- *Blair Athol Distillery*

*Looking across to Dalwhinnie Distillery in the Cairngorms National Park*



# Deanston Distillery

Tours available

## LOCATION

Doune, Perthshire.

## HOW TO GET THERE

Located just 8 miles north of Stirling, Deanston Distillery can be easily reached by car.

## OVERVIEW

Visit the distillery to discover more about its fascinating past and discover how Deanston craft their light, fresh whisky, using only Scottish ingredients.

Located on the banks of the River Teith, 8 miles north of Stirling, the beautiful buildings that are now home to Deanston Distillery were built in 1785 and originally housed a thriving cotton mill. Following a gradual decline in the industry, this once booming mill was eventually closed in 1965, but the buildings were given a new lease of life in 1967, following the opening of Deanston Distillery.

Tour prices begin at £8 for the standard Deanston Tour, which also includes a dram of Deanston 12 Year Old, though if you want to discover more about the distillery's past life as a booming cotton mill, as well as learn about the craft

that goes into making Deanston's single malts, then the Deanston Heritage Tour is for you.

The Heritage Tour, priced at £30, will take you on a fascinating 75 minute journey through Deanston's 18th century heritage before guiding you through the modern craft that goes into producing every drop of Deanston's light and zesty single malts. Stroll through the historic workers village and learn about the area's heritage, follow your knowledgeable guide to Deanston's pure water source and compare three Deanston single malts during your Tasting Room Experience.

## OPENING TIMES

10am – 5pm.

## SAMPLE

- Deanston 12 Year Old
- Deanston Virgin Oak
- Deanston Spanish Oak
- Deanston Toasted Oak
- Deanston 1974
- Deanston Festival Edition

## WHERE TO BUY

Most major retailers and online.

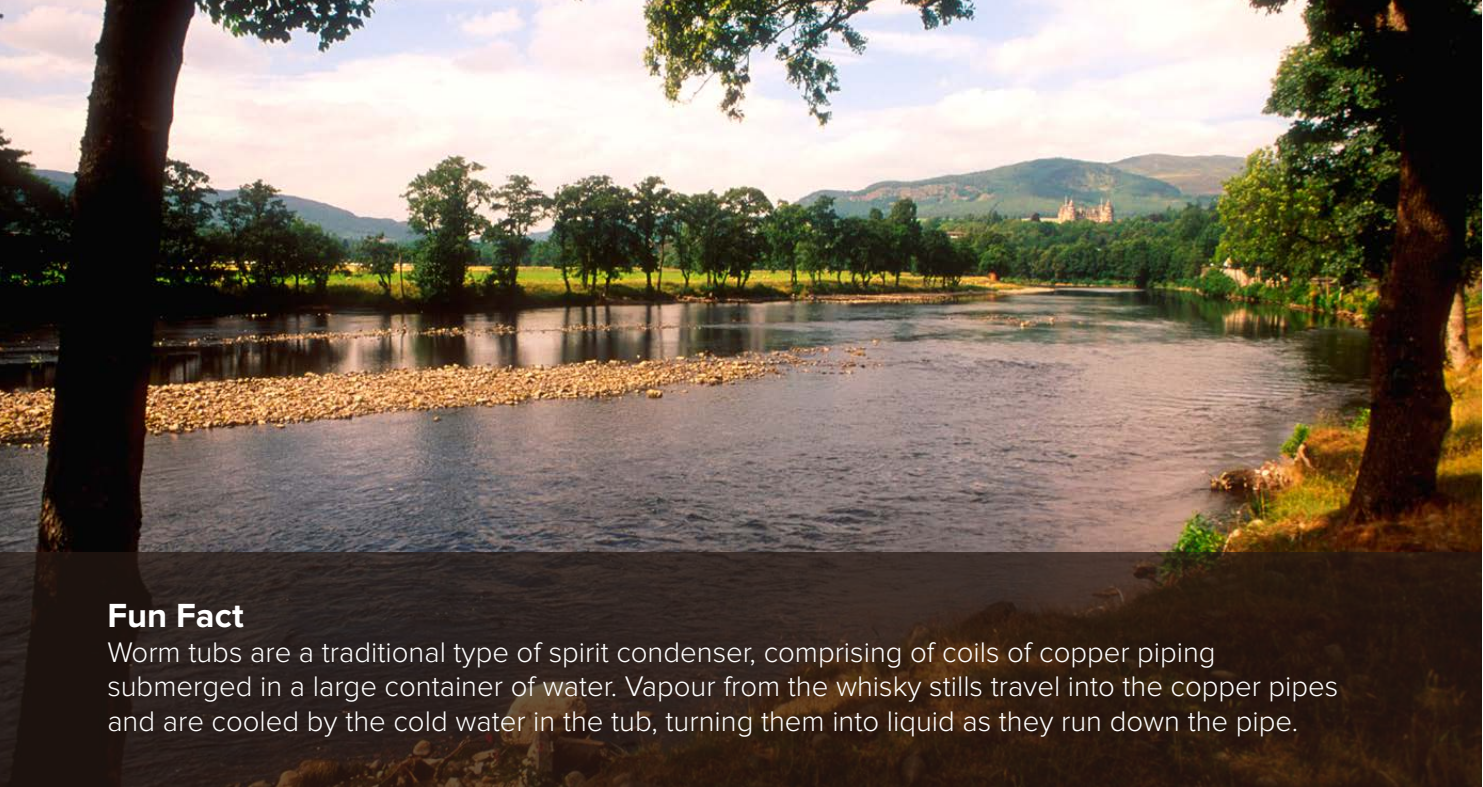
## OTHER NEARBY ATTRACTIONS

- *Doune Castle, Doune*
- *Blair Drummond Safari Park,*
- *Stirling Castle*
- *Wallace Monument, Stirling*
- *Glengoyne Distillery*
- *Tullibardine Distillery*

*The nearby Doune Castle*







**Fun Fact**  
Worm tubs are a traditional type of spirit condenser, comprising of coils of copper piping submerged in a large container of water. Vapour from the whisky stills travel into the copper pipes and are cooled by the cold water in the tub, turning them into liquid as they run down the pipe.

# Edradour Distillery

Tours available

**LOCATION**  
Pitlochry, Perthshire.

**HOW TO GET THERE**  
Just 40 minutes north of Perth, the distillery sits just off the A9 in the charming town of Pitlochry.

**OVERVIEW**  
Edradour Distillery is one of the smallest distilleries in Scotland, and prides itself on producing whisky in the most traditional and authentic way possible. Edradour’s impressive single malt collection encompasses a huge variety of flavours and finishes, including the rich and fruity whiskies in their Classics collection, the Ballechin Heavily Peated range and wine matured expressions.

Visit the distillery for a fully guided tour, priced at £7.50, and see the traditional equipment that produces all of Edradour’s stunning single malts, from the smallest whisky still in Scotland to the traditional worm tubs.

Enjoy the sights and sounds of this picturesque working distillery before you head to the Tasting Bar for a delectable dram.

**OPENING TIMES**  
10am – 5pm.

- SAMPLE**
- Edradour 10 Year Old
  - Edradour 10 Year Old Burgundy Cask Finish
  - Edradour 10 Year Old Chardonnay Cask Finish
  - Edradour 2004 Signatory Unchillfiltered
  - Edradour 12 Year Old Caledonia
  - Edradour Ballechin Bourbon Cask Matured
  - Edradour Cream Liqueur

**WHERE TO BUY**  
At the distillery or via independent stockists.

- OTHER NEARBY ATTRACTIONS**
- *Blair Athol Distillery, Pitlochry*
  - *Dewar’s World of Whisky, Aberfeldy*
  - *Heathergems Scottish Jewellery, Pitlochry*
  - *Blair Castle, Blair Atholl*
  - *Highland Safaris, near Aberfeldy*

# Fettercairn Distillery

Tours available

**LOCATION**  
Fettercairn, Aberdeenshire.

**HOW TO GET THERE**  
Located just off the A90 between Dundee and Aberdeen and just a short drive from Laurencekirk.

**OVERVIEW**  
Set amidst lush countryside, at the foothills of the spectacular Cairngorm Mountains, Fettercairn Distillery is handily located between Dundee and Aberdeen, making it the perfect place to stop off as you travel between the cities or just a short trip from each of them.

Along with Glencadam Distillery, located in Brechin, Fettercairn Distillery is one of the last whisky distilleries still in production in this beautiful corner of the country, giving it unrivalled access to the crystal-clear water from the natural springs in the Cairngorm Mountains, a vital ingredient in its light balanced whiskies.

Tour the distillery to discover how it produces its light and fruity Highland malts and taste a sample of one of Fettercairn’s distinctive whiskies for yourself.

**OPENING TIMES**  
Phone in advance to check.

- SAMPLE**
- Fettercairn Fior
  - Fettercairn Fasque

**WHERE TO BUY**  
Online.

- OTHER NEARBY ATTRACTIONS**
- *Edzell Castle and Garden*
  - *The Grassic Gibbon Centre*
  - *Montrose Basin Visitor Centre*
  - *House of Dun and Garden*
  - *Royal Lochnagar Distillery*
  - *Glen Garioch Distillery*

# Glencadam Distillery

**LOCATION**  
Brechin, Angus.

**OVERVIEW**  
Discover whiskies from Glencadam, the only remaining Angus distillery from the whisky boom in the 1800s.

Taste the delicate, mellow, spirit which is said to get its light manner from travelling through an unusual lyne pipe. Connecting the stills to the condenser, this pipe is angled upwards, rather than downwards.

Crafting limited supplies of artisan whisky, Glencadam was bought and revived by Angus Dundee Distillers PLC in 2003 and released its first Glencadam Single Malt Whisky Aged 15 years in 2005.

By refraining from using peated barley during the malt drying process, Glencadam Distillery produces single malts with a creamy texture and pure character.

See if you can locate the floral, orange taste of the 21 year-old, or the vanilla, spice and sherry tones of the 14 year-old Oloroso finish.

Get your hands on one of the rare occasional single class malts which are aged between 25 and

30 years-old to enjoy a sweet nose and fragrant, creamy, and floral tones to taste.

**Not open to the public.**

- SAMPLE**
- Glencadam 10 Year Old
  - Glencadam 12 Year Old Portwood Finish
  - Glencadam 14 Year Old Oloroso Cask Finish
  - Glencadam 15 Year Old
  - Glencadam 21 Year Old

**WHERE TO BUY**  
Online and specialist whisky retailers.

- OTHER NEARBY ATTRACTIONS**
- *The Caledonian Railway Brechin*
  - *Montrose Basin Visitor Centre*
  - *Edzell Castle and Garden*
  - *Brechin Golf Club*
  - *JM Barrie’s Birthplace Museum*
  - *Fettercairn Distillery*
  - *Royal Lochnagar Distillery*

The River Tummel in Pitlochry

The nearby Edzell Castle and its pretty gardens







# GlenDronach Distillery

Tours available

## LOCATION

Forgue, outside Huntly, Aberdeenshire.

## HOW TO GET THERE

GlenDronach Distillery is located on the B9001 off the A97 in Fergie, just outside Huntly in Aberdeenshire. Huntly is accessible by both bus and train.

## OVERVIEW

Discover this quintessential distillery nestled amongst the greenery of Aberdeenshire’s countryside.

Learn of the colourful history, traditional heritage and fine sherried malt whiskies of GlenDronach Distillery. Founded in 1826 by an eccentric and exuberant character named James Allardice, the distillery was soon producing popular spirits and

attracting wealthy investors, such as the author Sir Walter Scott.

A must for anyone who likes a sweet and fruity whisky, GlenDronach’s malts are richly sherried in casks, a method which has been employed by the distillery for nearly 200 years. The distillery staff originally lived on site and some of the buildings remain to this day. Glen House was home to a number of managers over the years and is said to be haunted by a woman who arrived from Spain in a sherry cask!

Recent years have seen a revival of this whisky spurred on by the new owners, BenRiach Distillery Company, who took over in 2008 and began releasing the original 12 year-old. Explore the full range, which includes 15 and 18 year-olds alongside rarer whiskies, such as single cask bottlings like the 1968 Recherche.

Join one of the four tours at GlenDronach to see the whisky process in its historic

surroundings. On the Premium Tasting Tour you can sample three whiskies, including a dram of the Distillery Manager’s cask, an exclusive distillery experience.

## OPENING TIMES

Opening times vary – check the website.

## SAMPLE

- GlenDronach 12 Year Old Original
- GlenDronach 15 Year Old Revival
- GlenDronach 18 Year Old Allardice.

## WHERE TO BUY

Whisky shops and online.

## OTHER NEARBY ATTRACTIONS

- *Malt Whisky Trail*
- *Huntly Castle*
- *Deans of Huntly*
- *Huntly Golf Club*
- *The Grouse Inn*
- *Glen Garioch Distillery*
- *Royal Lochnagar Distillery*
- *Fettercairn Distillery*

# Glen Garioch Distillery

Tours available

## LOCATION

Oldmeldrum, Aberdeenshire.

## HOW TO GET HERE:

The distillery is located in the heart of the valley of the Garioch in the historic market town of Oldmeldrum, just 17 miles from Aberdeen in the north eastern tip of Scotland.

## OVERVIEW

More than 200 years old, this distillery is the most easterly whisky distillery in Scotland. Over the years the business has changed hands many times, and so has the whisky’s taste. It changed to an unpeated whisky in 1997 and has since evolved into the hearty Highland malt that it is today. See if you can taste the robust spirit’s vanilla notes and velvety texture.

If you’re looking for something a little different, Glen Garioch offers a Perfect Pairs experience, combining the scrumptious combination of drams with several cheeses. Sample the legendary Founder’s Reserve with comté, a creamy French cheese.

Tours start at £7, and offer a comprehensive look behind-the-scenes of the distillery, telling the tales of its eventful past and revealing the tricks and techniques behind its carefully crafted production, allowing you to truly appreciate the unique taste of a dram.

## OPENING TIMES

Open all year round Monday – Saturday. Tours must be booked by prior arrangement.

## SAMPLE

- Glen Garioch Founder’s Reserve
- Glen Garioch 12 Year Old
- Glen Garioch Vintage 1978
- Glen Garioch Vintage 1990
- Glen Garioch Virgin Oak
- Glen Garioch 15 Year Old Renaissance

## WHERE TO BUY

Glen Garioch is available at most major retailers and online.

## OTHER NEARBY ATTRACTIONS

- *Inverurie Farmers Market*
- *Potters Kitchen, Inverurie*
- *Meldrum House Hotel Restaurant, Oldmeldrum*
- *Royal Lochnagar Distillery*
- *Fettercairn Distillery*

# Glenglassaugh Distillery

Tours available

## LOCATION

By Sandend Bay, Portsoy, Aberdeenshire.

## HOW TO GET THERE

The distillery sits to the west of Portsoy – take the A98 west to reach Glenglassaugh.

## OVERVIEW

You’ll find that the character of Glenglassaugh Highland malt whisky naturally reflects the coastal scenery in which it is distilled.

Founded in 1875 by the banks of the Glenglassaugh Burn, the distillery’s motto is translated from Latin as ‘By Sea, By Land’. Glenglassaugh Distillery has opened and closed a number of times and experienced both turbulent and tranquil times, much like the North Sea itself.

Take a tour to discover the distillery’s history, from World War II, when the maltings was turned into a forces bakery, to the

industrious 1960s and 1970s, as well as Glenglassaugh’s demise and closure in 1986. Discover how Glenglassaugh burst back to life in 2008 when the first new spirit ran from stills to create a fresh and exciting new range of whiskies.

Fittingly named Revival, the first whisky to be bottled was matured in both red wine and fresh bourbon casks to create a mulled-wine, sherry and caramel finish. Try the award-winning and highly sought after old vintages of the 1960s, 1970s and 1980s, such as Glenglassaugh 51 Year Old. Its rich mahogany colour and deep fig, prune and apricot scent all adds to the mellow taste which has hints of treacle and peppery oak.

Take the Revival tour to follow the journey from barley to whisky and the history of Glenglassaugh before a tasting. The Behind The Scenes Tour grants privileged access to the distillery, including the coastal warehouse, as well as a selection of drams. Don’t miss the chance to bottle your own whisky or stock up in the gift shop before you leave.

## OPENING TIMES

Open Monday to Sunday from 10.00am - 4.30pm, between May and September, but only weekdays for the rest of the year.

## SAMPLE

- Glenglassaugh Revival
- Glenglassaugh 30 Years Old

## WHERE TO BUY

Whisky shops and online.

## OTHER NEARBY ATTRACTIONS

- *Portsoy Ice Cream*
- *MacDuff Marine Aquarium*
- *Strathlene Buckie Golf Course*
- *Duff House*
- *Strathisla Distillery*
- *Glen Grant Distillery*

GlenDronach Distillery



# Glengoyne Distillery

Tours available

### LOCATION

Dumgoyne, near Killearn.

### HOW TO GET HERE

Glengoyne is an easy distillery to reach, just a 40 minute drive from Glasgow and 30 minutes from Stirling. It is situated just south of the Trossachs.

### OVERVIEW

Producing its malt since 1833, the Glengoyne Distillery distills at a slower rate than any other malt whisky. The spirit is nursed through the stills at one third the usual rate to create a complex, fruity and award-winning spirit.

The Glengoyne Distillery is situated in a wooded valley beside a small river that flows into the famous Loch Lomond, which is

one of the reasons why it is often described as Scotland’s most beautiful distillery.

Glengoyne offers a range of diverse and exciting distillery tours all year round, from the Wee Tasting Tour to an exclusive Whisky and Chocolate Matching Tour, where you can have a truly indulgent tasting session. You’ll have the chance to sample the exquisite 15 Year Old and the award-winning 21 Year Old with handmade chocolates from the local chocolatiers, Nucoco Chocolate.

### OPENING TIMES

Open all year round. Advanced tours must be booked by prior arrangement.

### SAMPLE

- Glengoyne 10 Year Old
- Glengoyne 15 Year Old
- Glengoyne 18 Year Old
- Glengoyne 21 Year Old

### WHERE TO BUY

Glengoyne is available at many major retailers and at the Glengoyne online shop.

### OTHER NEARBY ATTRACTIONS

- *Queen Elizabeth Forest Park*
- *Balloch Castle Country Park*
- *Dumbarton Castle*
- *Clydebank Museum*
- *Deanston Distillery*

# Glenmorangie Distillery

Tours available

### LOCATION

Tain, near Dornoch.

### HOW TO GET THERE

Travel by car from Inverness on the A9.

### OVERVIEW

Located on the glittering Dornoch Firth, half a mile from the quaint village of Tain, Glenmorangie Distillery is famously home to the tallest stills in Scotland. At 16 ft 10 ¼ inches, they are the same height as a fully grown giraffe! Established in 1843, Glenmorangie’s distinctive icon, known as the signet, comes from the Pictish Hilton of Cadboll Stone, which was located on Glenmorangie land.

Glenmorangie whiskies are noted for their smooth and elegant character. The distillery’s famously tall stills ensure that only the lightest vapours can rise high enough to be condensed, resulting in a fresh and pure spirit. Under the guidance of Dr Bill Lumsden, Glenmorangie’s esteemed Head of Distilling and Whisky Creation, Glenmorangie is famous for experimenting with different cask finishes, giving you an impressive range of single malts to try.

Tours range from The Original Tour, priced at £5, which includes a tour around the distillery and a free sample of Glenmorangie whisky, to the extra-special The Heritage Tour, priced at £120. The Heritage Tour includes a trip to the distillery’s highly prized water source, the Tarlogie Springs, as well as a visit to the extraordinary Hilton of Cadboll Stone, which Glenmorangie takes its intricate signet from. You’ll then be treated to lunch, along with a tasting of a range of Glenmorangie malts, before you leave with a special memento of your visit.

### OPENING TIMES

Open all year though opening times vary.

### SAMPLE

- Glenmorangie The Original 10 Year Old
- Glenmorangie 18 Year Old
- Glenmorangie Lasanta 12 Year Old
- Glenmorangie Signet

### WHERE TO BUY

Most major retailers and online.

### OTHER NEARBY ATTRACTIONS

- *Balblair Distillery, Edderton*
- *Dalmore Distillery, Alness*
- *Dunrobin Castle, Dunrobin*
- *Anta Pottery, Fearn*
- *Glasstorm Contemporary Glass Studio and Gallery, Tain*
- *Tain Golf Course*

Glengoyne Distillery





# Glen Ord Distillery

Tours available

## LOCATION

Muir of Ord, Ross-shire.

## HOW TO GET THERE

Glen Ord Distillery is based in Muir of Ord, around 10 minutes’ walk from the nearest train station or 14 miles drive from Inverness.

## OVERVIEW

One of the oldest distilleries in Scotland, Glen Ord was founded in 1838 on the edge of the Black Isle, to the west of Inverness.

Throughout its history, Glen Ord has continued to malt its own barley and to use the long fermentation and slow distillation methods developed over generations.

You have to visit the distillery in person to sample the whisky, the Singleton of Glen Ord, as it is not available anywhere else in the UK or Europe, but only in Asia. It has a rich, smooth-tasting, well-balanced flavour.

Watch the distillers at work as they create this magical malt whisky on a tour and sample a taste to see how it is sweet, malty and dry on the palate. Take a look around the shop for wide variety of single malt whiskies as well as books, glassware and other items.

## OPENING TIMES

Opening times vary.

## SAMPLE

- Singleton of Glen Ord 12 Year Old
- Singleton of Glen Ord 15 Year Old
- Singleton of Glen Ord 18 Year Old

## WHERE TO BUY

At the distillery shop online.

## OTHER NEARBY ATTRACTIONS

- *Inverness Museum & Art Galley*
- *Culloden Battlefield*
- *Fort George*
- *Urquhart Castle*
- *Dingwall Museum*
- *Tomatin Distillery*
- *Dalmore Distillery*

# Glenturret Distillery

(Home to The Famous Grouse Experience)

Tours available

## LOCATION

Near Crieff, Perthshire.

## HOW TO GET HERE

The distillery is located just north of Crieff in Perthshire, near a town called Hosh. It’s about an hour’s drive from Edinburgh and Glasgow and it is picturesquely set on the banks of the River Turret.

## OVERVIEW

Glenturret is Scotland’s oldest distillery, dating back to 1775, and has an intriguing story. Did you know that its origins lie with

a group of smugglers of the 18th century? This was a time when it was fairly common for whisky to be produced out with the law in Scotland.

The distillery is perhaps best known for housing the Famous Grouse Experience, where you can learn about how Scotland’s most famous blend is made. You can even see the world’s largest bottle of whisky here, containing 228 litres of The Famous Grouse.

During your visit, you will also be able to see the secrets behind the Glenturret Single Malt, with tours to suit all levels of whisky enthusiasts. There’s also the Glenturret Café and Bar, where you can sit back and enjoy some hot food, or sip on a delectable whisky cocktail.

## OPENING TIMES

Open 7 days a week, 10am – 6pm (5pm Nov – Feb).

## SAMPLES

- Glenturret 10 Year Old
- Glenturret 18 Year Old
- Glenturret 1999 – The MacPhail’s Collection

## WHERE TO BUY

Major retailers and online.

## OTHER NEARBY ATTRACTIONS

- *Strathearn Distillery*
- *Tullibardine Distillery*
- *Ruthven Gallery*
- *Huntingtower Castle*
- *Scottish Crannog Centre*
- *Drummond Gardens*

The nearby city of Inverness on a summer’s night







# Isle of Arran Distillery

Tours available

## LOCATION

Lochranza, Isle of Arran.

## HOW TO GET THERE

The ferry crossing to Arran takes just 55 minutes from Ardrossan on the Scottish mainland.

## OVERVIEW

The Isle of Arran Distillery is one of the few remaining independent distilleries in Scotland. Though it was only founded in 1994, the distillery prides itself on only using traditional methods in the creation of its carefully crafted single malts. Visit the distillery to see the traditional wooden washbacks and copper stills and to sample a dram or two of their lovingly made whisky.

Join the Oak Tour (£6/5) for an in-depth tour around the distillery, along with a free welcome dram of Arran 14 Year Old and a taste of the Arran Gold Cream Liqueur. On the Copper Tour (£15) you'll taste the same drams as the Oak Tour, along with a tutored tasting of the 10 Year Old, 12 Year Old Cask Strength and one tasting of your choice.

On the Gold Tour (£60) you'll be treated like a true VIP. As well as a welcoming dram and a tour of the facilities you'll also see the distillery's highly prized water source, be taken on a warehouse tour, receive a tutored tasting of six Arran malt whiskies, and be given a 200 ml bottle of Cask Strength Arran Malt, and a tasting glass to take home with you.

After your tour, head to the distillery's on-site restaurant for a delicious bite to eat or browse the selection of gifts for something unique to take home with you.

## OPENING TIMES

Open all year though opening times vary.

## SAMPLE

- Arran 10 Year Old
- Arran 12 Year Old
- Arran 14 Year Old
- Arran Gold Cream Liqueur

## WHERE TO BUY

Specialist retailers and online.

## OTHER NEARBY ATTRACTIONS

- *Brodict Castle and Country Park, Brodict*
- *Arran Brewery, Cladach*
- *Isle of Arran Heritage Museum, Rosaburn*
- *Machrie Moor Standing Stones, Machrie*

The copper stills at Isle of Arran Distillery

# Highland Park Distillery

Tours available

## LOCATION

Kirkwall, Orkney.

## HOW TO GET HERE

The Highland Park Distillery is the most northerly distillery in Scotland, and can be found on Mainland Orkney in the town of Kirkwall. You can travel to Orkney by car, ferry or plane.

## OVERVIEW

Founded in 1798, the distillery will forever be associated with the notorious smuggler, Magnus Eunson. The name Highland Park originates from the rise of the hills above Kirkwall which were known as the High Park. This was where Magnus carried out his illicit trades.

There are tours available all year round, where knowledgeable guides will explain the careful process from malting to distillation. The Magnus Eunson Tour and the Viking Tour are not to be missed - you'll get a chance to dig deeper into the history and have the opportunity to sample a range of different whiskies.

At the Highland Park Distillery, you'll taste the influence of the Orkney islands, where the surrounding landscape is an important part of the process of whisky creation. It is one of the only remaining distilleries in Scotland which still malts its own barley. The Hobbister Moor is home to an abundance of heathery peat, which is around 4,000 years old and is used as one of the fundamental flavours in this delicate single malt.

## OPENING TIMES

Open all year round.

## SAMPLE

- Highland Park 12 Year Old
- Highland Park 15 Year Old
- Highland Park 18 Year Old
- Highland Park Odin
- Highland Park Einar
- Highland Park Leif Eriksson

## WHERE TO BUY

Highland Park is available in the distillery's online shop and at most major supermarkets and retailers.

## OTHER NEARBY ATTRACTIONS

- *Scapa Distillery*
- *St Magnus Cathedral*
- *Hobbister NNR*
- *Italian Chapel*
- *Scapa Flow*
- *Orkney Wireless Museum*

Highland Park Distillery





# Isle of Harris Distillery

## LOCATION

Tarbert, Isle of Harris.

## HOW TO GET THERE

Travel by ferry from Uig, on the Isle of Skye, to Tarbert, on the Isle of Harris, or from Ullapool to Stornoway on the Isle of Lewis. Fly to Stornoway on Lewis and drive to Harris.

## OVERVIEW

Scheduled to open in spring 2015, the Isle of Harris Distillery will become Harris’s only working distillery, and only the second in the Outer Hebrides, after Abhainn Dearg Distillery which is located on the Isle of Lewis.

Once it is up and running, the distillery will begin filling casks with their new whisky, called The Hearach, which is the Gaelic word for an inhabitant of Harris. Visit this beautiful new distillery, based in a stunning water side setting in Tarbert, once it opens and enjoy seeing the making of The Hearach as it happens.

Tours will be available once open.

## OPENING TIMES

Scheduled to open spring 2015.

## OTHER NEARBY ATTRACTIONS

- *Seallam! Visitor Centre, Northton*
- *Gearrannan Blackhouse Village, Carloway*
- *Hebscape Gallery and Tearoom, Ardhasaig*
- *Abhainn Dearg Distillery, Carnish*

# Isle of Jura Distillery

Tours available

## LOCATION

Craighouse, Isle of Jura.

## HOW TO GET THERE

Board the Jura passenger ferry (running mid-April till mid-September) at Tayvallich on the mainland and arrive at the port just outside Jura Distillery, or travel by the car ferry from Port Askaig on Islay to Port Feolin on Jura.

## OVERVIEW

Travelling to the Isle of Jura Distillery, located on the gorgeously untamed island of Jura, is an adventure in itself. Whether you choose to take the car ferry from Port Askaig on Islay or the passenger ferry from Tayvallich, located on the west coast of the Scottish mainland, you’re guaranteed spectacular views of Jura’s rugged mountain landscape and an exhilarating boat trip across the glittering sea.

Founded in 1810, Jura Distillery fell into disuse by the late 1800s before being rebuilt in 1963 by two dedicated locals. Today the distillery produces a wide range of malts, ranging from sweet and full bodied to deliciously peated. Book a tour of this unique island distillery to learn about how they craft their wonderful malts and savour a sample.

## OPENING TIMES

Open all year though opening times vary. Tours must be booked in advance.

## SAMPLE

- Jura Origin
- Jura Superstition
- Jura Diurach’s Own
- Jura Prophecy

## WHERE TO BUY

Most major retailers and online.

## OTHER NEARBY ATTRACTIONS

- *Corryvreckan Whirlpool*
- *Paps of Jura*
- *Islay*

The pier at Tarbert, on Harris

Looking over the water to Craighouse, on Jura







View from Duncryne Hill  
over Loch Lomond

# Invergordon Distillery

## LOCATION

Dalmore, near Dingwall.

## OVERVIEW

Around 3 miles east of Dalmore lies the Invergordon Distillery, a grain whisky specialist. The whisky produced here is a component of many blended whiskies made in Scotland. Invergordon is the only grain distillery in the Highlands and it was built in 1960, as one of a new generation of grain whisky factories.

Not open to the public.

## SAMPLE

- Invergordon 8 Year Old
- Invergordon 21 Year Old

## WHERE TO BUY

You can purchase online.

## OTHER NEARBY ATTRACTIONS

- *Hugh Miller’s Birthplace Cottage and Museum*
- *Dingwall Museum*
- *Fort George*
- *Glenmorangie Distillery*
- *Balblair Distillery*
- *Dalmore Distillery*

# Loch Lomond Distillery

## LOCATION

Alexandria, Dumbarton.

## OVERVIEW

The Loch Lomond Distillery is a very versatile distillery, producing grain and single malt whiskies. It produces seven different single malts, some of which are intended for making blends. Loch Lomond is a unique whisky-making location, sitting perfectly on the boundary between Highland and Lowland, although the malts are mostly regarded as Highland whiskies. The magnificent Ben Lomond mountain towers above the loch and looks down on the distillery.

Not open to the public.

## SAMPLE

- Loch Lomond Original
- Loch Lomond 12 Year Old

## WHERE TO BUY

Online.

## OTHER NEARBY ATTRACTIONS

- *Loch Lomond Brewery*
- *Oak Tree Inn*
- *Loch Lomond Shores Farmers’ Market*
- *Glengoyne Distillery*
- *Tullibardine Distillery*

# Macduff Distillery

## LOCATION

Macduff, Aberdeenshire.

## OVERVIEW

The Macduff Distillery is situated on the north coast of Aberdeenshire. The town of Macduff and its neighbour Banff are separated only by a bridge over the River Deveron, where the whisky takes its name. The Macduff single malt is fairly rare, as the whisky is usually bottled as the Glen Deveron 10 Year Old. Only a small amount will be made into single malt as the distillery’s main purpose is to supply for blends, most notably the William Lawson blends.

Not open to the public.

## SAMPLE

- Glen Deveron 10 Year Old
- Glen Deveron 15 Year Old
- Macduff 2000 – Connoisseur’s Choice

## WHERE TO BUY

Online.

## OTHER NEARBY ATTRACTIONS

- *Macduff Aquarium*
- *Royal Tarlair Golf Course*
- *Huntly Castle*
- *Duff House*
- *Royal Lochnagar Distillery*
- *Glen Garioch Distillery*
- *GlenDronach Distillery*





# Oban Distillery

Tours available

## LOCATION

Oban, Argyll.

## HOW TO GET THERE

Travel by car along the A85, take the train or bus from Glasgow, fly into Oban Airport, or arrive by ferry.

## OVERVIEW

The beautiful coastal town of Oban grew up around Oban Distillery, which, rather unusually for a Scotch whisky distillery, sits right in the heart of Oban town centre. Founded in 1794, Oban Distillery was the brainchild of two of the town's founders, brothers John and Hugh Stevenson. Oban Distillery's single malts are often described as rich and smoky, characterised by sweet and fruity flavours, along with notes of brine and seaweed, due to its beautiful seaside setting.

Join a Sensory & Flavour Finding Tour (£8) to witness the traditional craftsmanship of whisky production first-hand and learn the secrets that make Oban Distillery's malts unique. Along the way you'll be given plenty of opportunities to awaken your senses, including a tasting of Oban Distillery's single malt whisky straight from the cask and a complimentary dram of the Oban 14 Year Old, paired with crystallised ginger.

## OPENING TIMES

Open all year though opening times vary.

## SAMPLE

- Oban 14 year old West Highland Malt whisky
- Oban Distillers Edition

## WHERE TO BUY

Most major retailers and online.

## OTHER NEARBY ATTRACTIONS

- *Ben Nevis Distillery, Fort William*
- *The Oban Chocolate Company, Oban*
- *Oban War and Peace Museum, Oban*

- *McCaig's Tower, Oban*
- *Dunstaffnage Castle, Dunbeg*
- *Ocean Explorer Centre, Dunbeg*

# Pulteney Distillery

Tours available

## LOCATION

Wick, Caithness.

## HOW TO GET THERE

Travel by car along the A99, take the train to Wick station or fly into Wick John O'Groats Airport.

## OVERVIEW

Set in a remote seaside location, the town of Wick blossomed during the herring boom of the 1800s, becoming the busiest herring port in Europe. Pulteney Distillery was built in 1826 before Wick was connected to the road network. Consequently its whisky was exported around the world by boat and as such Wick became renowned for the barrels of silver

(herring) and gold (whisky) which left the port in vast numbers.

Old Pulteney whisky is famed for its crisp clean taste, and possesses notes of sweetness and spice which are enhanced by traces of salt and smoke. Book a tour (beginning at £6) to discover how Pulteney Distillery craft their highly esteemed whiskies and see the curiously shaped copper stills which are famously missing their 'swan neck'. The story goes that when the stills were delivered to the distillery they were too tall for the still house – so the distillery manager simply cut the top off. Discover how these uniquely shaped stills contribute towards Old Pulteney's complex taste before sampling a dram for yourself.

## OPENING TIMES

Open all year though opening times vary.

## SAMPLE

- Old Pulteney 12 year old
- Old Pulteney 17 year old
- Old Pulteney 21 year old

## WHERE TO BUY

Most major retailers and online.

## OTHER NEARBY ATTRACTIONS

- *Clynesh Distillery, near Brora*
- *Wick Heritage Centre, Wick*
- *The Castle and Gardens of Mey, Mey*
- *Caithness Horizons, Thurso*

# Royal Brackla Distillery

## LOCATION

Cawdor, Moray.

## OVERVIEW

Founded in 1812, Brackla Distillery was granted a Royal Warrant by King William IV in 1835 and gained the right to call itself 'Royal Brackla'. It was one of only three distilleries to be awarded this distinction, along with Royal Lochnagar and Glenury Royal (now closed). Today, most of the distillery's whisky is used in blends, such as Dewar's and

Johnnie Walker Gold Label, though some bottles of single malt are available.

Not open to the public.

## SAMPLE

- Dewar's Blended Scotch
- Johnnie Walker Gold Label

## WHERE TO BUY

Online.

## OTHER NEARBY ATTRACTIONS

- *Glen Ord Distillery, Muir of Ord*
- *Tomatin Distillery, Tomatin*
- *Cawdor Castle, Cawdor*
- *Fort George, Inverness*
- *Culloden Battlefield, Culloden*

Oban Distillery

The still room at Pulteney Distillery



# Royal Lochnagar Distillery

Tours available

## LOCATION

Balmoral, Aberdeenshire.

## HOW TO GET THERE

Travel by car along the A93.

## OVERVIEW

Visit Royal Lochnagar Distillery, set against the backdrop of the towering Lochnagar Mountain, and walk in the footsteps of royalty. Located just a mile or so from Balmoral Castle, the distillery’s Royal Warrant was granted by Queen Victoria in 1848, following Her Majesty’s visit to the distillery

with her husband Prince Albert. It is said that the royal couple were keen whisky drinkers and took up the chance to see the distillery in action while they were in residence at Balmoral.

Join the Lochnagar Tour (£7) for a guided tour of the distillery and enjoy a dram of the Royal Lochnagar 12 Year Old or book the Reserve Tour (£10), which also comes with a tasting of the exclusive Royal Lochnagar Selected Reserve.

If you’re looking for something a little bit special then book onto the exclusive Royal Tour (£30). Enjoy a welcoming cup of coffee and shortbread in the library while you learn about the history of the distillery before following your knowledgeable guide on an in-depth tour of the distillery. Afterwards, taste Royal

Lochnagar’s smooth, sweet and creamy whiskies, including a specially selected rare whisky, and see which of the rich tasting notes you can pick out.

## OPENING TIMES

Open all year though opening times vary.

## SAMPLE

- Royal Lochnagar 12 Year Old
- Royal Lochnagar Selected Reserve

## WHERE TO BUY

Selected retailers and online

## OTHER NEARBY ATTRACTIONS

- *The Glenlivet Distillery, Glenlivet*
- *Tomintoul Distillery, Ballindalloch*
- *Balmoral Castle, Balmoral*
- *Braemar Castle, Braemar*
- *The Old Royal Station, Ballater*

# Scapa Distillery

## LOCATION

St Ola, Kirkwall, Orkney.

## OVERVIEW

Scapa is only one of two distilleries on Orkney, an archipelago of 70 islands clustered off the north coast of mainland Scotland. Like many island distilleries, Scapa Distillery was deemed an ill-considered location when it was founded in 1885. Scapa and its neighbour, Highland Park, have successfully proven that the remoteness of the islands and the sometimes unforgiveable weather (there are no trees anywhere on Orkney) will never be obstacles to whisky distilling.

Scapa Distillery, however, looks out onto the usually placid waters of Scapa Flow – a sheltered, deep body of water which was once home to the Royal Navy’s main anchorage and the dramatic scene of the scuttling of the German High Seas Fleet in 1919. During the First World War, the distillery was even used as a billet for sailors – a somewhat unorthodox choice of accommodation.

Nowadays, a team of just three operators keep the distillery manned and producing the distillery’s only single malt expression, the Scapa 16 Year Old.

Not open to the public.

## SAMPLE

- Scapa 16 Year Old

## WHERE TO BUY

Available at most major retailers and online.

## OTHER NEARBY ATTRACTIONS

- *Highland Park Distillery*
- *St Magnus Cathedral*
- *Stenness Stones*
- *Ring of Brodgar*
- *Kirkwall*
- *Italian Chapel*
- *Skara Brae*

Royal Lochnagar Distillery





# Strathearn Distillery

Tours available

## LOCATION

Methven, Perthshire.

## HOW TO GET THERE OVERVIEW

Described as a micro-distillery, Strathearn operates in a converted 160-year-old farmstead in the lush Perthshire countryside. Opened in 2013 by enthusiasts Tony Reeman-Clark, David Lang and David Wight, the distillery produces whisky as well as gin and speciality ales.

It is perhaps one of the only distilleries in Scotland that offers tours alongside whisky and gin-making courses. The courses range from one-day whisky or gin-making experiences to five-day whisky-making schools where participants will have a full, hands-on experience of producing new make spirit from grain to glass.

## OPENING TIMES

Open all year round Monday to Friday. It is best to arrange an appointment first as opening hours can vary.

## SAMPLE

The distillery's first matured whisky is expected in 2016.

## WHERE TO BUY

If you can't wait for their whisky, you can buy Strathearn's gin from local farmers markets in Forfar and Perth or online.

## OTHER NEARBY ATTRACTIONS

- *Blair Atholl Distillery*
- *Blair Castle, Blair Atholl*
- *Perth*
- *Scone Palace*

*The stills at Strathearn Distillery*





# Talisker Distillery

Tours available

### LOCATION

Carbost, Isle of Skye.

### HOW TO GET THERE

From the Kyle of Lochalsh, the gateway to the Isle of Skye, follow the A87 – the island’s main artery – as far as Sligachan. From here, turn left onto the A863 towards Dunvegan before taking another left turn onto the B8009 following signs for Carbost. Driving through the hamlet, the distillery is at the bottom of the hill by the lochshore.

### OVERVIEW

As the longest operating distillery on the expansive Isle of Skye, Talisker has secured itself a place in the island’s folklore. Despite loud protests by the local reverend Roderick MacLeod, the distillery sprang up in Carbost on the shores of Loch Harport in 1830. Despite a shaky start, Talisker single malt was to become one of the largest selling single malt whiskies by the turn of the 20th century.

Such was the demand for Talisker whisky that the distillery had a pier and small tramway built in spite of its size and relatively small islander workforce. Despite

grain shortages forcing its closure during WWII, Talisker solidified its reputation in subsequent decades as one of Scotland’s classic malts.

Today, the distillery attracts visitors as much for its whisky as its dramatic setting. Just paces from the shoreline of Loch Harport, it enjoys spectacular views of the Black Cuillin mountains.

### OPENING TIMES

All year round except Christmas and New Year with some seasonal opening hours applying.

### SAMPLE

- Talisker 10 Year Old
- Talisker 18 Year Old
- Talisker 25 Year Old
- Talisker Distillers Edition
- Talisker 57 North

### WHERE TO BUY

Available at most major retailers and online.

### OTHER NEARBY ATTRACTIONS

- *Dunvegan Castle*
- *Eilean Donan Castle*
- *Glenfinnan*
- *Dark Sky Discovery points*
- *Skye Museum of Island Life*

The still room at Talisker Distillery



# Teaninich Distillery

### LOCATION

Alness, Inverness-shire.

### OVERVIEW

A true Highland dram, the Teaninich Distillery produces its whisky from the town of Alness.

This distillery is totally unique in its processes. Instead of a mash tun, it uses a filter press to extract sugars from the malt - a similar technique to that used in beer brewing.

It has one official bottling from the Flora and Fauna range, however most of its malts are used for components in blends, such as Haig, Johnnie Walker and Vat 69.

Not open to the public.

### SAMPLE

- Teaninich Flora & Fauna 10 Year Old

### WHERE TO BUY

You can purchase online.

### OTHER NEARBY ATTRACTIONS

- *Glenmorangie Distillery*
- *Dalmore Distillery*
- *Hugh Miller’s Birthplace Cottage and Museum*
- *Groam House Museum*
- *Dingwall Museum*
- *Fort George*





# Tobermory Distillery

Tours available

### LOCATION

Tobermory, Isle of Mull.

### HOW TO GET THERE

Take the ferry from Oban or Kilchoan.

### OVERVIEW

Whether you prefer your malts smooth and well-rounded or gorgeously peated, Tobermory Distillery will help you find your new favourite. Tobermory is one of the few Scottish distilleries to produce both peated and un-peated ranges of whisky, from the fruity, unpeated Tobermory malts to the more robust and smoky Ledaig expressions.

Established in 1823, Tobermory Distillery is one of the oldest distilleries in Scotland and was originally named Ledaig, meaning 'safe haven' in Gaelic. Visit the beautiful Isle of Mull and discover how the island's unique character helps to craft Tobermory's whiskies, including the distillery's softly peated water which is drawn from high in the hills above the town. Book a tour of the distillery (£6) to learn more about the age-old techniques that the distillery uses to craft their single malts before sampling a dram.

### OPENING TIMES

Open all year though tours should be booked in advance.

### SAMPLE

- Tobermory 10 Year Old
- Tobermory 15 Year Old
- Tobermory 19 Year Old
- Ledaig 10 Year Old

### WHERE TO BUY

Selected retailers and online.

### OTHER NEARBY ATTRACTIONS

- *Ardnamurchan Distillery, Ardnamurchan*
- *Oban Distillery, Oban*
- *Tobermory Marine Exhibition, Tobermory*
- *Mull Museum, Tobermory*
- *Aros Park*
- *The Old Byre Heritage Centre, Dervaig*

# Tomatin Distillery

Tours available

### LOCATION

Tomatin, Inverness-shire

### HOW TO GET THERE

Tomatin Distillery is located 16 miles north of Aviemore and 15 miles south of Inverness on the main A9 trunk route.

### OVERVIEW

On the eastern edge of the Monadhliath Mountains lies Tomatin Distillery. The site has seen whisky production since the 15th century, originally filling the flasks of drovers on their way to market - although during some periods distillery operations were not always legal!

A formal distillery has been running from 1897, and today operates 12 stills and continues to use spring water from the stream named Alt-na Frith, which translates from the Gaelic as 'free burn'.

The whisky produced is light and sweet, typical of the characteristics of Highland malts, and you can discover how it is made on one of three different tours. Before you leave, pop to the visitor centre where you can fill your own bottle with cask strength, distillery-exclusive whisky to

take home with you, or watch the distillery film.

### OPENING TIMES

Opening times vary – please see website.

### SAMPLE

- Tomatin 12 Year Old
- Tomatin 14 Year Old
- Tomatin 18 Year Old
- The Tomatin Legacy
- 1988 Batch Release
- Cù Bòcan

### WHERE TO BUY

Buy Tomatin bottlings from a number of retail outlets and online.

### OTHER WHISKY ATTRACTIONS

- *Cragganmore Distillery*
- *Glenlivet Distillery*
- *Clava Cairns*
- *Culloden Battlefield and Visitors Centre*
- *Inverness Floral Hall*

*Tobermory Distillery*

*Looking down to the River Findhorn at Tomatin*



# Tullibardine Distillery

Tours available

## LOCATION

Blackford, Perthshire.

## HOW TO GET THERE

Tullibardine Distillery is located at the Eaglesgate Retail Village on Stirling Street in Blackford, Perthshire. Situated on the A9 between Stirling and Perth, it can be accessed by bus from both cities and Gleneagles is the nearest train station.

## OVERVIEW

You may be puzzled to see that Tullibardine has been producing since 1488, nearly 10 years before

whisky came into existence. However, at this time Tullibardine was creating beer and is believed to be the first place where the purchasing of beer was recorded. In fact, the person who bought it was a soon-to-become King James IV of Scotland, stopping by en-route to his coronation.

Eventually this brewery in the Perthshire countryside was converted into a distillery and started to distil the spirit in 1949. By the base of the rolling Ochil Hills, the distillery makes use of natural filtering which occurs as water trickles down through basalt and red sandstone to Danny Burn.

Much of the whisky distilled here is still matured in the same way as it was in 1949, in traditional sherry casks. Taste for toffee, apples and

cereal with hints of vanilla, dates and spices. Characteristically sweet, Tullibardine whisky is now also available matured in bourbon barrels and also finished with Burgundy.

See the whole process on a tour and enjoy a selection of tastings before browsing the distillery shop and stopping by the café. For something a bit different, look out for Tullibardine 1488 Whisky Beer, which is now made by the distillery and is matured in newly disgorged whisky casks, giving a rich whisky colour and aftertaste.

## OPENING TIMES

Open daily - please see website.

## SAMPLE

- Tullibardine 20 Year Old
- Tullibardine 25 Year Old
- Tullibardine Sovereign
- Tullibardine 500 Sherry Finish

## WHERE TO BUY

Distillery shop and other whisky shops.

## OTHER NEARBY ATTRACTIONS

- *Ruthven Gallery*
- *Drummond Gardens*
- *The Library of Innerpeffray*
- *Golf at The Gleneagles Hotel*
- *Barley Bree Restaurant*
- *The Ochil Hills*
- *Glengoyne Distillery*
- *Deanston Distillery*

# Wolfburn Distillery

## LOCATION

Thurso, Caithness.

## OVERVIEW

Wolfburn Distillery began producing whisky in January 2013,

making it one of Scotland’s newest distilleries. The new distillery is actually a reincarnation of the old Wolfburn Distillery (founded in 1821) and draws its water from the same burn as the original distillery.

Not open to the public.

## SAMPLE

First casks of Wolfburn single malt expected in 2016.

## OTHER NEARBY ATTRACTIONS

- *Pulteney Distillery, Wick*
- *Caithness Horizons, Thurso*
- *The Castle and Gardens of Mey, Mey*

*The nearby PGA Centenary Course at Glenagles, used for The Ryder Cup 2014*







Be sure to check out our guides for the other **four regions**.

Driving around Scotland is a great way to see more of the country but before you head out exploring by car, there are a few rules and regulations you should be aware of: [www.visitscotland.com/travel/information/driving-in-scotland](http://www.visitscotland.com/travel/information/driving-in-scotland)

Drink responsibly: find useful information about drinking: [www.drinksmarter.org](http://www.drinksmarter.org)