

The Land of Whisky

A visitor guide to one of Scotland's five whisky regions.

Speyside



Whisky

The practice of distilling *whisky* has been lovingly perfected throughout Scotland for centuries and began as a way of turning rain-soaked barley into a drinkable spirit, using the fresh water from Scotland's crystal-clear springs, streams and burns.

To this day, distilleries across the country continue the tradition of using pure spring water from the same sources that have been used for centuries.

From the source of the water and the shape of the still to the wood of the cask used to mature the spirit, there are many factors that make Scotch whisky so wonderfully different and varied from distillery to distillery.

No two are the same; each has its own proud heritage, unique setting and its own way of doing things that has evolved and been refined over time. Paying a visit to a distillery lets you discover more about the environment and the people who shape the taste of the Scotch whisky you enjoy. So, when you're sitting back and relaxing with a dram of our most famous export at the end of your distillery tour, you'll be appreciating the essence of Scotland as it swirls in your glass.

Home to the greatest concentration of distilleries in the world, Scotland is divided into five distinct whisky regions. These are Highland, Lowland, Speyside, Islay and Campbeltown.

Find out more information about whisky, how it's made, what foods to pair it with and more:

www.visitscotland.com/whisky

For more information on travelling in Scotland:

www.visitscotland.com/travel

Search and book accommodation:

www.visitscotland.com/accommodation





- | | | |
|----------------|------------------|-------------------|
| 01 BENROMACH | 21 GLENTAUCHERS | 41 CRAGGANMORE |
| 02 DALLAS DHU | 22 GLEN GRANT | 42 TORMORE |
| 03 GLENBURGIE | 23 GLEN SPEY | 43 ALLT-A-BHAINNE |
| 04 MILTONDUFF | 24 TAMDHU | 44 BENRINNES |
| 05 ROSEISLE | 25 GLENROTHES | 45 GLENLIVET |
| 06 LINKWOOD | 26 DUFFTOWN | 46 BALMENACH |
| 07 GLEN MORAY | 27 CRAIGELLACHIE | 47 TAMNAVULIN |
| 08 LONGMORN | 28 MACALLAN | 48 TOMINTOUL |
| 09 GLENLOSSIE | 29 CARDHU | 49 BRAEVAL |
| 10 BENRIACH | 30 KININVIE | 50 SPEYSIDE |
| 11 GLEN ELGIN | 31 GLENFIDDICH | |
| 12 MANNOCHMORE | 32 BALVENIE | |
| 13 SPEYBURN | 33 ABERLOUR | |
| 14 AUCHROISK | 34 DAILUAINNE | |
| 15 INCHGOWER | 35 KNOCKANDO | |
| 16 AULTMORE | 36 BALLINDALLOCH | |
| 17 STRATHISLA | 37 GLENALLACHIE | |
| 18 KNOCKDHU | 38 GLENDULLAN | |
| 19 STRATHMILL | 39 MORTLACH | |
| 20 GLEN KEITH | 40 GLENFARCLAS | |

Speyside

Speyside is home to some of Scotland's most beautiful scenery and lush landscapes, as well as roughly half of all the Scottish whisky distilleries. The region is located in the magical Highlands, east of Inverness, and reaches from the glittering Moray coastline down towards the majestic Cairngorms National Park.

The region takes its name from the sparkling River Spey, which runs through the area, and you'll find the majority of its distilleries in the beautiful glens surrounding this bubbling water source.

The area's rich supply of pure water and beautiful inland setting help to produce smooth and complex whiskies that provide an elegant contrast to the salty and heavily peated whiskies that are produced by distilleries in other regions. Speyside whiskies are characterised by sweet and fruity notes, ranging from ripe pears to sultanas. Hints of nuts and malt are common, while some whiskies also possess a refined smokiness.

With so many distilleries packed into a relatively small area, in

Speyside you're never far from a distillery or two. From small scale producers who handcraft whisky using traditional methods to some of the most famous distilleries in the world, Speyside is the perfect place to learn all you need to know about the art of whisky creation.

Why not follow the renowned **Malt Whisky Trail** and visit some of the area's top whisky attractions? Or visit during the famous **Spirit of Speyside Whisky Festival** in April/ May, and get involved in some of the unique whisky events in the festival's packed programme. You could even discover the craft that goes into making whisky casks at the fantastic **Speyside Cooperage**.

Whether you're already a whisky lover or are still to sample your first dram, you're sure to uncover more than a few fascinating facts – as well as some delicious drams – during your visit to Speyside.

Read on to discover more about Speyside's wonderful whisky distilleries and plan your trip around the area.

Be sure to check out our guides for the other four whisky regions: **Campbeltown, Islay, Lowland and Highland.**

www.visitscotland.com/distilleries-guides

Aberlour Distillery

Tours available

LOCATION

Aberlour, Moray, the Highlands.

HOW TO GET THERE

The distillery is on the right-hand side as you enter the village of Aberlour on the A95 heading north to Craigellachie.

OVERVIEW

Aberlour was so called from the Gaelic name for the burn that runs past it, Obar Lobhair – ‘the mouth of the chattering burn.’ According to legend, ancient Celtic Druid priests were drawn to the area because of the noise the Lour burn made as it flowed from the mountains. They too made use of the water here to distil alcohol for medicinal purposes.

Although the labels on its whisky bottles read 1879, the distillery as we know it today was actually first founded and built in 1826. As with many distilleries, tradition is often the secret to their success and part of Aberlour’s appeal is continuity. For instance, the current distillery team were all present when the present 18 Year Old spirit was first put in casks.

Some of these distillery workers even remember the days the brewer would tour the distillery and distribute three drams of new whisky a day to each worker – a tradition long since stopped at Scotland’s distilleries.

OPENING TIMES

Open all year around, except Christmas and New Year’s Day.

SAMPLE

- Aberlour 12 Year Old Double Cask
- Aberlour 12 Year Old Sherry Cask Matured
- Aberlour 15 Year Old Double Cask
- Aberlour 16 Year Old Double Cask
- Aberlour 18 Year Old Double Cask
- Aberlour A’Bunadh (limited batch) Cask Strength

WHERE TO BUY

Available at most major retailers and online.

OTHER NEARBY ATTRACTIONS

- *Benromach Distillery*
- *Cragganmore Distillery*
- *Dallas Dhu Historic Distillery*
- *Glenfarclas Distillery*
- *Glenfiddich Distillery*
- *RSPB Osprey Centre, Loch Garten*
- *Speyside Cooperage*
- *Strathisla Distillery*

Allt-a-bhainne Distillery

LOCATION

Glenrinnnes, near Dufftown, Moray, the Highlands.

OVERVIEW

Opened in 1975, Allt-a-bhainne is a relatively new distillery. Its main purpose is to create single malt whisky to be used in Chivas Brothers blended whisky. They do release rare bottlings of their single malts from time to time, including Allt-a-bhainne 21 Year Old, Allt-a-bhainne 1980 Sherry Cask and more. They are available to buy from whisky shops and online retailers.

Not open to the public.

OTHER NEARBY ATTRACTIONS

- *Aberlour Distillery*
- *Cairngorm National Park*
- *Cragganmore Distillery*
- *The Glenlivet Distillery*
- *Glenfiddich Distillery*
- *Speyside Cooperage*

The beautiful Loch Garten





Auchroisk Distillery

LOCATION

Mulben, Dufftown, Moray, the Highlands.

OVERVIEW

Built in 1974 to supply single malt whisky for Justerini & Brooks' J&B Scotch whisky blend, Auchroisk whisky (pronounced 'Athrusk') began to be released as a single malt whisky in 1986, under the name Singleton of Auchroisk. In 2001 the Singleton name was dropped and today bottles of Auchroisk single malt are released under the distillery's own name.

Although the distillery is not open to the public, you can still try a taste of J&B Scotch whisky or Auchroisk single malt.

Not open to the public.

SAMPLE

- Auchroisk 10 Year Old – Flora and Fauna
- J&B Scotch whisky

WHERE TO BUY

Bottles of J&B can be found via most major retailers and bottles of Auchroisk single malt can be bought online.

OTHER NEARBY ATTRACTIONS

- *Glenfiddich Distillery, Dufftown*
- *The Balvenie Distillery, Dufftown*
- *The Whisky Line, Keith and Dufftown Railway*
- *Spirit of Speyside Whisky Festival*

Banks of the River Spey near Balmenach Distillery

Aultmore Distillery

LOCATION

Near Keith, Moray, the Highlands.

HOW TO GET THERE

Aultmore Distillery is located on the road to Buckie just north of Keith in Moray, the Highlands. Keith can be reached by train and bus as well as car.

OVERVIEW

You've heard of whisky that benefits from unique waters or barrels – but Aultmore Distillery uses fog! The distillery's location was specifically chosen, both for its nearby rail links but also for its close proximity to Foggie Moss, an area often shrouded in mist.

It was all discovered originally by illicit whisky smugglers in the 19th century, who saw the water from the mist collect in the moss and purify as it trickled down through the bracken, gorse and heather. The fog also helped to disguise their illegal work.

It's well worth the atmospheric trip through the fog to visit Aultmore, where you can see if you can taste the light, grassy overtones said to seep through in their whisky.

The name of the distillery itself is derived from the Gaelic for 'big burn' after the Auchinderran Burn which flows from the moss and supplies the distillery.

Uncover Aultmore's historic moments, such as when the distillery developed the now commonplace practice of creating animal feed from whisky by-products in the 1950s. See the steam engine in the reception and spot the train tracks within the grounds, all that remains following a complete rebuild in the 1970s.

If you enjoy a dram from John Dewar & Sons' popular blended Scotch whisky range then you're likely to be sipping whisky from Aultmore Distillery. For over 100 years very few people knew of the sweet malty taste of Aultmore's single malts, known locally as 'a nip of Buckie Road'.

Try this highly regarded and rarely available whisky in single malt form as part of the Last Great Malts range, alongside Aberfeldy, Aultmore, Craigellachie, Macduff and Royal Brackla.

OPENING TIMES

Visits to this distillery are by prior arrangement only.

SAMPLE

- Aultmore 12 Year Old
- Aultmore 21 Year Old
- Aultmore 25 Year Old

WHERE TO BUY

Online.

OTHER NEARBY ATTRACTIONS

- *Strathisla Distillery*
- *Gordon Castle Walled Garden*
- *Speyside Cooperage*
- *Keith and Dufftown Railway*
- *Huntly Castle*

Balmenach Distillery

LOCATION

Cromdale, Moray, the Highlands.

OVERVIEW

Using the valleys of the Cromdale Haughs as its water source, Balmenach Distillery then implements traditional methods to create whisky before it is matured in oak casks for many years until the spirit is deemed at its best for bottling.

Located in Cromdale near the River Spey in the Cairngorms National Park, the distillery was one of the first distilleries to be licensed to produce Scotch whisky in 1824.

You're most likely to drink Balmenach whisky in branded blends from current owners International Beverages, such as Hankey Bannister and MacArthur's. Some single malts are available but are quite rare as the distillery only occasionally allows the independent bottling of them.

If you do try a dram, such as the 18 Year Old Deerstalker, you'll enjoy a strong peppery taste with hints of dried banana, leather, tobacco and an overall malty sweetness.

Now the distillery creates a number of beverages, including Caorunn Gin. The gin is made with five Celtic botanic ingredients that grow wild in the forests of Scottish Highlands and are vaporised using a Copper Berry Chamber that was made for the distillery in the 1920s.

Not open to the public.

SAMPLE

Limited bottlings include:

- The 18 Year Old Deerstalker
- Gordon & McPhail Connoisseurs Choice: Balmenach 2004

WHERE TO BUY

Whisky shops and online.

OTHER NEARBY ATTRACTIONS

- *Grantown-on-Spey Golf Club*
- *Grantown Museum*
- *Ballindalloch Castle*
- *Loch Garton Osprey Centre*
- *Macallan Distillery*



Ballindalloch Distillery

Tours available

LOCATION

Ballindalloch, Moray, the Highlands.

HOW TO GET THERE

The distillery is housed on the Ballindalloch Castle Estate, which is just off the A95 in the direction of Aberlour.

OVERVIEW

With a view to emphasising the

importance of the land to Scotland, the owners of Ballindalloch Estate, nestled in the beautiful Spey valley, set up Speyside's latest distillery in 2014. The establishment of Scotland's first single estate distillery also saw a return to traditional art of whisky-making for the Macpherson-Grant family.

The estate owners have lived at Ballindalloch Castle and surrounding lands since 1546. The founding principle of the estate distillery is to be firmly rooted in the local heritage with nearly all the tradesmen, stonemasons,

joiners, tillers and distillers coming from within 20 miles of the distillery.

Construction took place over summer 2014 with production starting in September. Visitors to the micro-distillery are welcome by appointment Monday to Friday where the guides will let you sample some of the family's private collection from the cask.

Tours available on request

SAMPLE

- Production has only just started but visitors will get to try a dram

or two from the Macpherson-Grant's private cask collection.

WHERE TO BUY

The distillery's first single malts are expected to be ready in eight to ten years.

OTHER NEARBY ATTRACTIONS

- *The Glenlivet Distillery*
- *Rothiemurchus Estate*
- *Ballindalloch Castle*

Balvenie Distillery

Tours available

LOCATION

Dufftown, Moray, the Highlands.

HOW TO GET THERE

Dufftown is served by local buses and the distillery can be reached easily on foot or by taxi from here. The nearest train stations are in Keith and Elgin.

OVERVIEW

Visiting Dufftown is a must for any whisky connoisseur, thanks to its status as the 'Malt Whisky Capital of the world'. With nine distilleries, most of which are open to the public, how would you decide which one to visit?

Selecting Balvenie Distillery is a good move for those looking for an in-depth tour of the whole process of making whisky. Everything happens on site - from growing the barley to bottling the final product. See the barley as it germinates on one of the last traditional malting floor in the Highlands and watch the coopers hard at work as they prepare casks for filling. Even the stills are uniquely designed, with longer necks which are said to help concentrate and sweeten the flavours of Balvenie whisky.

Taste and see if you can identify the rich, smooth and distinctive honeyed character of the spirit, as well as hints of fruit and vanilla. The most mature whisky of the current range is aged 50 years and was matured in a European oak sherry hogshead, which is rarely used today.

On an in-depth tour with only eight other people you can explore the main distillery as well as the malting floor, warehouse and cooperage, and bottle your own Balvenie Whisky from the cask.

OPENING TIMES

Open Monday to Friday for tours only.

SAMPLE

- The Balvenie DoubleWood 12 Year Old
- The Balvenie Caribbean Cask 14 Year Old
- The Balvenie DoubleWood 17 Year Old

WHERE TO BUY

Whisky shops and online.

OTHER NEARBY ATTRACTIONS

- *Balvenie Castle*
- *Dufftown Golf Club*
- *Dufftown Whisky Museum*
- *Knockando Wool Mill*
- *The Mash Tun Whisky Bar*
- *Huntly Castle*

Braeval (Braes of Glenlivet) Distillery

LOCATION

Chapelton of Glenlivet, Ballindalloch, Moray, the Highlands.

OVERVIEW

Founded as Braes of Glenlivet in 1973, this young distillery is situated in the lush Livet Glen at

the heart of Speyside, and nearby you can find the famous Glenlivet Distillery. In 1994 the decision was made to rename the distillery Braeval to avoid any confusion with The Glenlivet brand.

It was originally established by the Chivas and Glenlivet Group, primarily created to produce whisky for blending. There is no bottling at the distillery, although you can find Braes of Glenlivet/Braeval malt whisky from independent bottlers.

In 2002 the distillery closed and after renovations and refurbishment, it reopened in 2008. Braeval distillery has a classic whitewashed façade, complete with pagoda, but inside it's a thoroughly modern operation; the entire distilling process can be worked by one person. Along with Dalwhinnie, Braeval is one of the highest distilleries in Scotland, standing at around 350m above sea level.

Not open to the public.

SAMPLE

- Braeval 15 Year Old 1997 - Old Malt Cask (Hunter Laing)
- Braes Of Glenlivet 25 Year Old 1989 - Strictly Limited (Càrn Mòr)

WHERE TO BUY

Both these bottlings and other Braes of Glenlivet/Braeval whiskies are available to purchase online.

OTHER NEARBY ATTRACTIONS

- *The Glenlivet Distillery Visitor Centre*
- *Rothiemurchus Estate*
- *Ballindalloch Castle*

Striking Huntly Castle near Balvenie Distillery

Benromach Distillery

Tours available

LOCATION

Forres, Moray, the Highlands.

HOW TO GET THERE

The distillery is located on the outskirts of the ancient market town of Forres and is tucked away in the north of the Speyside area. It's easy to get here by car or if you'd rather take the train, you can travel to Forres railway station, which has connections to and from Inverness, Edinburgh and Aberdeen.

OVERVIEW

Have you ever wanted to test your distilling skills? At the Benromach Distillery, you'll experience a whisky which defines itself as a classic Speyside, and you'll even get the chance to make your own bottle to take home, with top tips from a master distiller. Whiskies in this region are known for their elegance and complexity, with hints of fruitiness, and Benromach is no exception. The distillery uses the finest malted barley and fresh spring water from the Romach Hills to produce a high quality spirit from Speyside's smallest distillery, where whisky experts ensure that the whisky is carefully filled into sturdy oak casks before being left to mature at Benromach for many years.

You can choose from a range of tours at the distillery, where you'll get the chance to try a few drams from the Benromach collection. Starting from £6, there is a range of tours suited for all whisky drinkers, from short tours to more detailed guided tours of the distillery with resident experts.

True whisky enthusiasts will be delighted by in-depth guided tours from the Distillery Manager, who will divulge fascinating facts about the whisky, its creation, its taste and the history of the distillery.

OPENING TIMES

Opening times vary – please see the website.

SAMPLE

- BenRiach 12 Year Old
- BenRiach 16 Year Old
- BenRiach 10 Year Old Peated
- BenRiach 15 Year Old Dark Rum Finish

WHERE TO BUY

Available at most major retailers and online.

Don't miss a visit to the distillery's Malt Whisky Centre shop which also sells gifts and merchandise.

OTHER NEARBY ATTRACTIONS

- *Aberlour Distillery*
- *Ballindalloch Distillery*
- *Cardu Distillery*
- *Cragganmore Distillery*
- *Glen Moray Distillery*
- *Glenfiddich Distillery*
- *Macallan Distillery*

BenRiach Distillery

Tours available

LOCATION

By Elgin, Moray, the Highlands.

HOW TO GET THERE

The distillery is located between Elgin and Rothes, off the A941.

OVERVIEW

The BenRiach distillery is situated deep in the heart of Speyside, and

produces rare whiskies from the north east of Scotland, between the town of Elgin and the village of Rothes. With unique whisky collections including the Classic Speyside, the Peated BenRiach, Wood Finish Expressions and many more, there's a whisky to suit every palette.

Since 1898, BenRiach has stood out with its distilling techniques - the distillery's distinctive pagoda-style chimneys help produce peated, malted barley, enabling a peat reek taste to settle inside the barrels. These whiskies can be purchased in many specialist whisky shops in Scotland.

Although the distillery is closed to the public, private tours can be arranged with the manager and cost £30.

WHERE TO BUY

It is available online and at specialist whisky shops all over the UK.

SAMPLE

- BenRiach 12 Year Old
- BenRiach 16 Year Old
- BenRiach 10 Year Old Peated
- BenRiach 15 Year Old Dark Rum Finish

OTHER NEARBY ATTRACTIONS

- *Elgin*
- *Elgin Cathedral*
- *Elgin Museum*
- *Spey Bay*
- *Glen Moray Distillery*



Fun fact

Celebrate your love of whisky at the Spirit of Speyside Whisky Festival from 30 April – 4 May, where you can sample many of these delicious drams as well as food, music, and much more.

Benrinnnes Distillery

LOCATION

Aberlour, Moray, the Highlands.

OVERVIEW

Benrinnnes is produced in the quiet surroundings of Aberlour where it makes its eponymous whisky. Today, the distillery's single malt whiskies are a rare treat, with the majority of the spirit is used in blends including Johnnie Walker and J&B.

In 1835, the distillery moved to its current location, on the site of Ben Rinnnes, a 840m peak which towers over Speyside.

This distillery is not open to the public, but watch out for the 15-Year-Old Flora and Fauna range which has been produced here since 1991.

Not open to the public.

WHERE TO BUY

Online.

SIGNATURE BRANDS

- Benrinnnes 15 Year Old – Flora and Fauna
- Benrinnnes 16 Year Old – The Maltman
- Benrinnnes 17 Year Old – Strictly Limited (Càrn Mòr)

OTHER NEARBY ATTRACTIONS

- *Mash Tun in Aberlour*
- *Aberlour Distillery*
- *Macallan Distillery*
- *RSPB Osprey Centre, Loch Garten*
- *Speyside Cooperage*

Benromach Distillery © John Paul



Cardhu Distillery

Tours available

LOCATION

Knockando, Moray, the Highlands.

HOW TO GET THERE

The distillery is located off the B9102, accessible from the A95, north of the Cairngorms National Park.

OVERVIEW

Cardhu translates as ‘Black Rock’ in Gaelic and is set in the heart of Speyside, the location of over half of Scotland’s malt whisky distilleries, many of which are world-renowned. In spite of such illustrious company, Cardhu continues to stand apart from the crowd, due in part to its unique origins.

It boasts the unusual distinction of being the only malt whisky distillery to have been pioneered by a woman. In 1811, Helen Cumming with the help of her husband John, sited their first still at Cardow Farm on Manno Hill overlooking the River Spey. The spring water which bubbled up naturally through the peaty earth was used by Helen to distil what was to become Cardhu’s first gallon of spirit. But this was still in the days of illicit stilling, and the Cummings had to conceal their contraband activities by selling their popular spirit – then known as Cardow – from their kitchen window, even hoisting a flag in the farmyard to warn neighbouring distillers when Customs and Excise men were in the area.

Things have changed a lot since then, but the legacy of Helen – who continued to distil whisky well into her 90s – remains alive and well. Cardhu spirit continues to be produced in small quantities,

using a deliberately slow distillation process that ensures its rarefied taste and quality.

Matured for up to 12 years in special oak casks, its silky smooth, mellow character has won it legions of fans, and it remains a key ingredient in Johnnie Walker, the most widely distributed of blended Scotch whisky in the world.

Learn more about Cardhu, the spiritual home of this iconic brand, on a tour of the distillery.

Tours are available Monday to Friday throughout the year and Saturday and Sunday during the summer months.

Enjoy a guided tour of the facility accompanied by a short history of Cardhu before bringing your visit to a close with a complimentary tasting. There are tours which also offer tutored nosings and tastings, as well as tastings touching on

Cardhu’s extensive range of single malts and blends.

OPENING TIMES

Opening times vary – please see website.

SAMPLE

- Cardhu 12 Year Old
- Cardhu 15 Year Old
- Cardhu 18 Year Old
- Cardhu Amber Rock
- Cardhu Special Cask Reserve
- Cardhu Gold Reserve

WHERE TO BUY

Available at Cardhu Distillery Shop, most major retailers and online.

OTHER NEARBY ATTRACTIONS

- *Malt Whisky Trail*
- *Spirit of Speyside Whisky Festival*
- *Knockando Woolmill*
- *Glenfarclas Distillery*
- *Ballindalloch Castle*
- *Cragganmore Distillery*

Craigellachie Distillery

LOCATION

Aberlour, Moray, the Highlands.

OVERVIEW

Craigellachie takes its name from the Gaelic for ‘rocky hill’ and refers to cliff overlooking the Spey Valley upon which much of its village stands.

It was built in 1891 by a group of merchants and blenders led by Alexander Edwards, owner of the Benrinnes Distillery. Known locally as ‘The White Hart Distillery’, it receives its water from the spring on Conval Hill and produces 3.6 million litres of spirit a year, most of which ends up in Dewar’s blended whiskies (White Label). Only a handful of official bottlings have been released.

Not open to the public.

SAMPLE

- Dewar’s White Label
- Craigellachie 13 Year Old
- Craigellachie 14 Year Old
- Craigellachie 23 Year Old

WHERE TO BUY

Available from most specialist and online merchants.

OTHER NEARBY ATTRACTIONS

- *Macallan Distillery*
- *Speyside Cooperage*
- *Craigellachie Hotel whisky bar The Quaich*
- *Cardhu Distillery*

Cardhu Distillery



Cragganmore Distillery

Tours available

LOCATION

Ballindalloch, Moray, the Highlands.

HOW TO GET THERE

Cragganmore Distillery is set in rural seclusion near the main Speyside railway line and the River Spey. It is easily accessible by car if travelling from Aviemore, Grantown-on-Spey and Aberlour.

OVERVIEW

Cragganmore is home to perhaps the most colourful, complex and surprising of the Speyside malts. One of the region's smaller distilleries, its spirit is highly prized by blenders and whisky aficionados all over the world, and as a result is nearly always in limited supply.

Founded in 1869 by John Smith, one of the key players in the whisky-boom period of the late 19th century, Cragganmore draws its water from the Craggan Burn which rushes down Craggan More Hill, and is one of the few distilleries which uses unique flat-topped spirit stills. This method, coupled with being

slowly condensed in traditional wooden worm tubs, is what lends Cragganmore its multi-faceted, faintly smoky character.

Cragganmore offers a choice of two tours. The Cragganmore Distillery Tour offers a guided tour of the facility along with a complimentary dram of Cragganmore Single Malt while the Cragganmore Expression Tour throws in a short history as well as a tutored nosing and tasting session of three single malts.

OPENING TIMES

Cragganmore Distillery will reopen in April 2015.

SAMPLE

- Cragganmore 12 Year Old
- Cragganmore Distillers Edition
- Cragganmore 25 Year Old Special Release 2014
- Cragganmore 14 Year Old Friends of the Classic Malts

WHERE TO BUY

Available at Cragganmore Distillery and most specialist online merchants.

OTHER NEARBY ATTRACTIONS

- *Rothiemurchus Estate*
- *Cardhu Distillery*
- *Ballindalloch Castle*

Dailuaine Distillery

LOCATION

Carron, Aberlour, Moray, the Highlands.

OVERVIEW

Founded in 1852, the whisky produced at Dailuaine Distillery is a key component in the world-famous Johnnie Walker range, though a small amount of whisky is released as single malts.

Although the distillery is not open to the public, you can still try a taste of Johnnie Walker Scotch whisky or Dailuaine single malt.

Not open to the public.

SAMPLE

- Dailuaine 16 Year-Old – Flora and Fauna
- Johnnie Walker Scotch whisky

WHERE TO BUY

Bottles of Johnnie Walker can be found via most major retailers and bottles of Dailuaine single malt can be bought online.

OTHER NEARBY ATTRACTIONS

- *Aberlour Distillery*
- *Cardhu Distillery*
- *Knockando Woolmill*
- *The Spey Larder*

Ballindalloch Castle in Moray



Dallas Dhu Historic Distillery

Tours available

LOCATION

Forres, Moray, the Highlands.

HOW TO GET THERE

The distillery is easily accessible from the A96 or you could take the train from Inverness to Forres and walk 15 minutes to the distillery.

OVERVIEW

Built in 1898, Dallas Dhu Distillery was originally named Dallasmore Distillery. Its name was changed in 1899, after just one year, when its new owners Wright & Greig Ltd changed the name to Dallas Dhu, to demonstrate the link between the distillery and their popular

blended whisky Roderick Dhu. The distillery was eventually closed in 1983, prompted by a shortage of water following a drought.

Although the distillery no longer produces any whisky, it is now run as a visitor centre and museum, giving you an insight into how whisky was produced in times past. Visit the distillery to discover more about Dallas Dhu's past and to see the original equipment, still in place. Tours cost £5.50 for an adult ticket and include a free dram.

OPENING TIMES

Open all year though opening times vary.

OTHER NEARBY ATTRACTIONS

- *Benromach Distillery*
- *Glen Moray Distillery, Elgin*
- *Brodie Castle, Forres*
- *Elgin Museum, Elgin*
- *Elgin Cathedral, Elgin*

Dufftown Distillery

LOCATION

Dufftown, Moray, the Highlands.

OVERVIEW

Opened by wine merchant Peter Mackenzie and several associates during the tail end of the whisky boom of the late 19th century, Dufftown-Glenlivet Distillery, as it was first christened, started production in 1895. It was sold to Arthur Bell & Sons in 1933 following a surge in demand for Scotch from post-prohibition America.

The distillery is not far from its namesake, Dufftown which remains at the heart of the Scotch whisky industry. As the local saying goes, "Rome was built on seven hills, Dufftown stands on seven stills". Around the world,

it is more widely known as the 'Whisky Capital of the world.'

Only a small percentage of the spirit produced is used for its own single malt bottlings. The rest, as much as 98 percent, is used in blended whisky. It also has the distinction of being the single largest Speyside single malt used in Bell's blended Scotch whisky.

Not open to the public.

SAMPLE

- *Dufftown 12 Year Old*
- *Dufftown 15 Year Old*

WHERE TO BUY

Available online from reputable retailers and specialist whisky shops.

OTHER NEARBY ATTRACTIONS

- *The Dufftown Whisky Musum*
- *'The Whisky Line'*
- *Strathisla Distillery*
- *Balvenie Distillery*

Glendullan Distillery

LOCATION

Dufftown, Moray, the Highlands.

OVERVIEW

If you think that you have similar taste to royalty, then Glendullan single malt whisky might be for you – it was supplied by request to King Edward VII in 1902, just four years after the distillery began production.

Located in Dufftown, the 'Malt Whisky Capital of the World',

Glendullan Distillery uses European Sherry Oak casks and American Bourbon Oak to craft a well-rounded smooth, richly fruity single malt whisky with a clean finish. Pair Glendullan with fresh buffalo mozzarella and air-cured hams for a tasty treat.

Not open to the public.

SAMPLE

- The Singleton of Glendullan 12 Year Old

WHERE TO BUY

Whisky shops and online.

OTHER NEARBY ATTRACTIONS

- *Balvenie Distillery*
- *Speyside Cooperage Visitor Centre*
- *Ballindollach Castle*
- *The Croft Inn*

The view from the top of Nelson's Tower, Forres



Glenfarclas Distillery

Tours available

LOCATION

Ballindalloch, Moray, the Highlands.

HOW TO GET HERE:

The Glenfarclas Distillery is located near the town of Ballindalloch, just north of the stunning Cairngorms National Park on the A95. It can be found in between the towns of Aberlour and Grantown-on-Spey.

OVERVIEW

Quietly situated in a picturesque corner of Scotland at the foot of the Ben Rinnes peak, the Glenfarclas name translates to the 'valley of the green grass' and it's easy to see why, with the distillery's awe-inspiring backdrop.

One of the only entirely family-run distilleries remaining in Scotland, it has been in production since 1836 and was purchased by John Grant for just £511.11. Since then, the Grant family have been producing single malt Scotch whisky for generations, and have truly mastered the art of whisky creation.

It is home to one of Scotland's original distillery visitor centres, where several tours are available. Go behind the scenes with the Connoisseur Tour, where one of the Glenfarclas Brand Ambassadors will introduce you to a selection of four of their favourite expressions of Glenfarclas.

OPENING TIMES

Opening times vary – please see website.

SAMPLE

- Glenfarclas 10 Year Old
- Glenfarclas 12 Year Old
- Glenfarclas 15 Year Old
- Glenfarclas 30 Year Old

WHERE TO BUY

Some major retailers and online.

OTHER NEARBY ATTRACTIONS

- *Ballindalloch Castle*
- *Knockando Woolmill*
- *Balvenie Castle*
- *Grantown Museum*
- *Glenlivet Estate*
- *Cragganmore Distillery*
- *Glenlivet Distillery*
- *Glen Moray Distillery*

Loch Morlich in the Cairngorm National Park



Glen Elgin Distillery

LOCATION

Longmore, Elgin, Moray, the Highlands.

OVERVIEW

Using soft spring water from burns that trickle into Millbuies Loch, Glen Elgin Distillery produces a smooth, fruity Speyside single malt with mellow honey tones.

The last distillery to be built in Speyside during whisky's boom

years in the late 1800s, it has seven stills, which is unusual as most scotch distilleries get their stills in pairs. Right up until 1950 the distillery was powered entirely by a water turbine driven by Glen Burn.

Glen Elgin is also known to be an important constituent of the White Horse blended whisky range, which is named after a famous coaching inn, The White Horse Cellar Inn in Edinburgh.

Not open to the public.

SAMPLE

Glen Elgin 12 Year Old

WHERE TO BUY

Whisky shops and online

OTHER NEARBY ATTRACTIONS

- *Glen Moray Distillery*
- *Spey Bay*
- *The Loft Bistro*
- *Elgin Golf Course*

Elgin Cathedral

Glenfiddich Distillery

Tours available

LOCATION

Dufftown, Moray, the Highlands

HOW TO GET HERE:

The distillery is just half a mile north of Dufftown in Banffshire, the place where the founder William Grant was born. Dufftown is served by local buses and the distillery can be reached easily on foot or by taxi from here. The nearest train stations are in Keith and Elgin.

OVERVIEW

The world's most awarded single malt Scotch whisky distillery, Glenfiddich is a whisky with an undeniable reputation for quality.

Since the day it was founded in 1886, the distillery has gone from strength to strength, producing one of Scotland's favourite single malts. Glenfiddich, which translates to the 'valley of the deer', was first produced with the founder's vision for it to be the 'best dram in the valley'.

Discover the largest pouring collection of Glenfiddich whiskies in the world, at the Malt Barn Bar inside the distillery, where you can stop for a dram or two as you explore. It is also the only place where you can sample the illustrious Malt Barn Collection.

The distillery, one of the largest in Scotland, offers a whisky experience like no other on the Glenfiddich Solera: Deconstructed Tour. Whisky lovers will be fascinated by this insight into the unforgettable dram that is the Glenfiddich Solera. Find out all the Solera secrets, and you'll even have the chance to fill a bottle by hand to take home.

OPENING TIMES

Opening times vary – please see website.

SAMPLE

- Glenfiddich 12 Year Old
- Glenfiddich 18 Year Old
- Glenfiddich 30 Year Old
- Glenfiddich 40 Year Old
- Glenfiddich Age of Discovery Madeira Cask Finish
- Glenfiddich Age of Discovery Bourbon Cask Reserve
- Glenfiddich 125th Anniversary Edition
- Glenfiddich Ultimate 38 Year Old

WHERE TO BUY

Major retailers and online.

OTHER NEARBY ATTRACTIONS

- *Balvenie Distillery*
- *The Dufftown Whisky Museum*
- *'The Whisky Line' - Keith & Dufftown Railway*

Did you know?

The Glenfiddich Distillery is the only distillery in Scotland to use a single source of water, the Robbie Dhu Springs.



The still room of Glenfiddich Distillery

Glen Moray Distillery

Tours available

LOCATION

Elgin, Moray, the Highlands.

HOW TO GET THERE

Glen Moray Distillery is based in Elgin, just 35 miles east of Inverness.

OVERVIEW

Take a tour of this distillery, and you could find yourself learning about Glen Moray from one of its own craftsmen! Glen Moray Distillery wants to offer you an authentic tour, with each guide knowing the process of whisky making so well, they can give you an unforgettable insight into how they combine water and barley to make their delicate well-balanced whisky.

Glen Moray has been distilled on the banks of the River Lossie since 1897, by a small but dedicated team of craftsmen.

The ingredients, processes and the skills of the craftsmen have remained the same over its 118 year history, as you can learn at this small, friendly and informal distillery. Bourbon barrels are sourced from North America to give the single malt whisky rich and spicy characteristics.

The distillery is part of the Malt Whisky Trail, which features nine of the area's great whisky attractions.

Glen Moray likes to think of themselves as one of the sunniest distilleries in Speyside. The area around Elgin is known as the 'Laich O' Moray' and has a mild climate – it's said that this area has 40 days more summer than any other part of Scotland! It's also believed

that the mild climate around the warehouse means the angels take more of a share of Glen Moray than they do from other whiskies.

OPENING TIMES

Opening times vary.

SAMPLE

- Glen Moray Classic
- Glen Moray 12 Years Old
- Glen Moray 16 Years Old
- Glen Moray 30 Years Old

WHERE TO BUY

Available at most major retailers and online.

OTHER NEARBY ATTRACTIONS

- *Malt Whisky Trail*
- *Elgin Cathedral*
- *Spynie Palace*
- *Glen Grant Distillery*
- *Macallan Distillery*
- *Speyside Cooperage*



Glenrothes Distillery

LOCATION

Rothes, Moray, the Highlands.

HOW TO GET THERE

You can reach Rothes from the A941, north or south. The village sits south of Elgin.

OVERVIEW

Glenrothes is a private distillery, established by a burn in the town of Rothes, back in 1879, meaning it has been producing its characteristic Speyside single malt for over 130 years.

The Glenrothes is an award-winning Speyside Single Malt Whisky of quality – brought together in a combination of factors from an unusually slow distillation process, to the tall copper pot stills which create a sweet, fruity and elegant spirit. In fact, the stills today have been designed and fashioned to be exact replicas of the originals, made way back in 1879.

Only a small number of vintages of the Glenrothes have been release and each vintage is rare and finite.

Although the distillery is not open to the public, it is taking part in the Spirit of Speyside Whisky Festival with a Glenrothes Barbecue on 2 May 2015.

SAMPLE

- Various Glenrothes Vintages
- Various Glenrothes Reserves
- Various Glenrothes Single Cask

WHERE TO BUY

Available at stores across the UK.

OTHER NEARBY ATTRACTIONS

- *Malt Whisky Trail*
- *Glen Grant Distillery*
- *Macallan Distillery*
- *Speyside Cooperage*

Breakwater at the River Lossie

Rothes town

Glen Spey Distillery

LOCATION

Rothes, Moray, the Highlands.

OVERVIEW

Glen Spey Distillery is little-known, as most of the 1.3 million litres a year produced goes in a J&B blended whisky. However, there is a 12 Year-Old Flora & Fauna bottling available to buy online, as well as other old and rare bottles.

The distillery was founded in 1878, and was sold again in 1887 – making it the first Scottish distillery ever to be owned by a non-Scottish company – in this case a London gin distiller. The distillery also had to be rebuilt in 1920 after a fire.

Not open to the public.

SAMPLE

- Glen Spey 12 Year Old
- Glen Spey 1988 25 Year Old single malts of Scotland
- Glen Moray 16 Years Old
- Glen Moray 30 Years Old

WHERE TO BUY

Available online.

OTHER NEARBY ATTRACTIONS

- *Malt Whisky Trail*
- *Glen Grant Distillery*
- *Macallan Distillery*
- *Speyside Cooperage*

Glentauchers Distillery

LOCATION

Keith, Moray, the Highlands.

OVERVIEW

The Glentauchers Distillery is situated next to the Tauchers Forest and it has been producing whisky since 1897. Since then, the business has gone through a few changes, including a brand new refurbished still room. The spirit has been largely associated with blends and it is an important component of Ballantines, Teachers and Chivas Regal.

Not open to the public.

SAMPLE

- Glentauchers 6 Year Old
- Glentauchers Batch 1
- Glentauchers 1994

WHERE TO BUY

Available online.

OTHER NEARBY ATTRACTIONS

- *Malt Whisky Trail*
- *Huntly Castle*

Glenallachie Distillery

LOCATION

Close to Aberlour, Moray, the Highlands.

OVERVIEW

Located amidst stunning Speyside countryside, Glenallachie Distillery draws its water from the natural springs on Ben Rinnes. The majority of Glenallachie Distillery's single malt whisky goes into blends, though a few rare bottles of Glenallachie single malt are available.

Not open to the public.

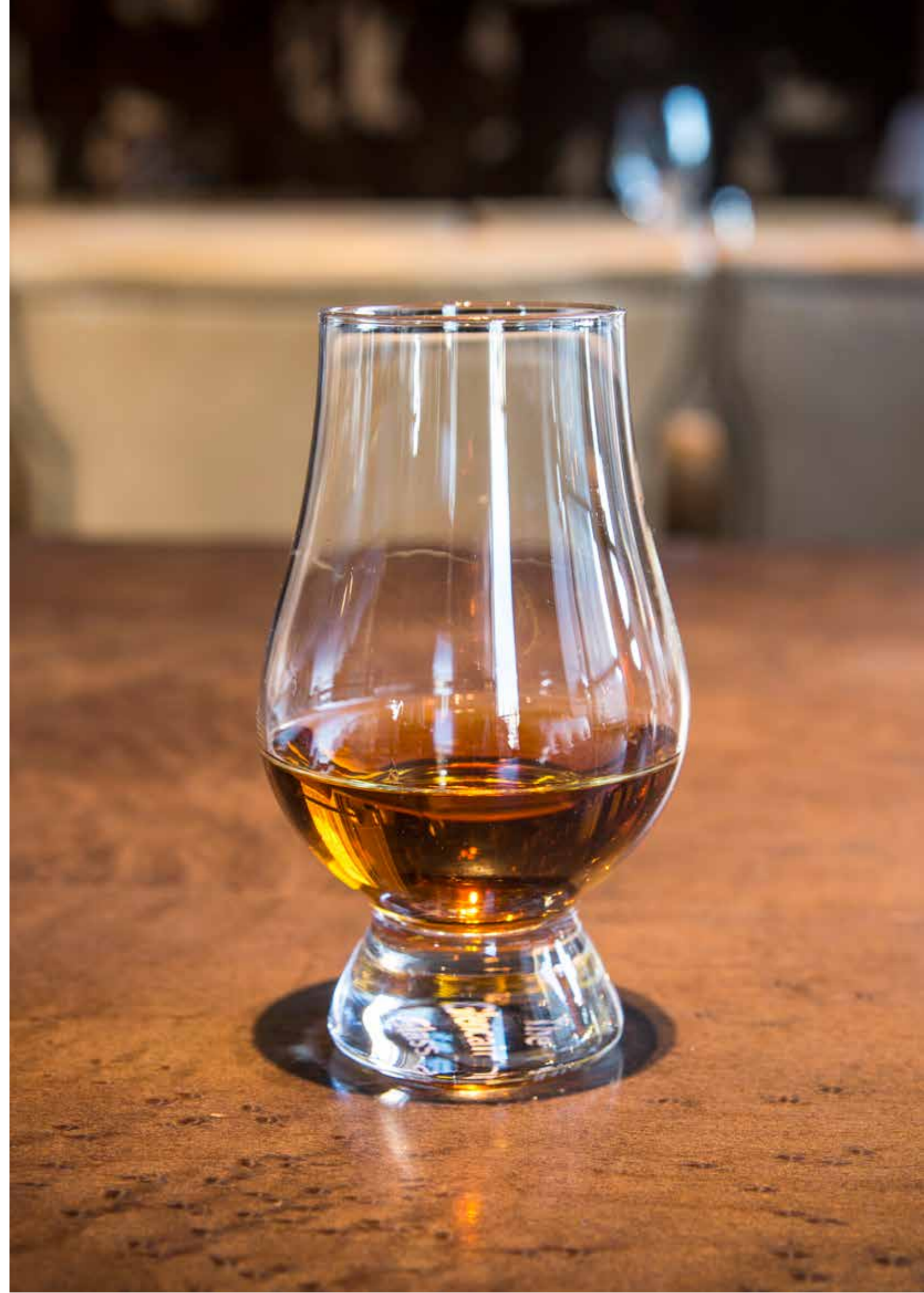
WHERE TO BUY

Online.

OTHER NEARBY ATTRACTIONS

- *Speyside Cooperage*
- *Balvenie Castle*
- *Knockando Woolmill*
- *Aberlour Distillery*
- *Benrinnes Distillery*

A glass of whisky



Glenburgie Distillery

LOCATION

By Alves, near Forres, Moray, the Highlands.

OVERVIEW

Established in 1810, Glenburgie Distillery was originally named Kinflat Distillery though changed its name in 1878. Today the distillery's single malts form an important part of Ballantine's blended whiskies.

Not open to the public.

SAMPLE

- Ballantine's blended whisky

WHERE TO BUY

Specialist stockists and online.

OTHER NEARBY ATTRACTIONS

- *Brodie Castle*
- *Elgin Cathedral*
- *Johnstons of Elgin Cashmere Centre*
- *Dallas Dhu Historic Distillery*
- *Benromach Distillery*

Glen Keith Distillery

LOCATION

Keith, Moray, the Highlands.

OVERVIEW

Glen Keith Distillery was established in 1957 by Chivas Brothers to supply a light single malt whisky for the Chivas blends.

Not open to the public.

SAMPLE

- Chivas Regal blended whisky

WHERE TO BUY

Online.

OTHER NEARBY ATTRACTIONS

- *Strathisla Distillery*
- *Aultmore Distillery*
- *Speyside Cooperage*
- *Gordon Castle*
- *Huntly Castle*

Glen Grant Distillery

Tours available

LOCATION

Roths, Moray, the Highlands.

HOW TO GET THERE

Located at the north end of Roths, 10 miles south of Elgin on the A941, Glen Grant is easily accessible by car or bus. Buses from Elgin stop 100 m from the distillery.

OVERVIEW

Famed for their famously fresh and light whiskies, with notes of orchard fruits, Glen Grant is one of the biggest selling single malts worldwide. Founded in 1840 by the Grant brothers, Glen Grant is the only whisky distillery to be named after its founders.

To this day the distillery still uses the unique distilling processes that were put in place by the innovative Grant brothers. Visit the distillery to discover how they craft their crisp single malts, from learning about the use of purifiers

in both parts of the distillation process to seeing Glen Grant's famously tall stills, which allow only the lightest and purest spirit to be distilled into each cask.

On the tour you'll learn about the entire whisky making process, and will even be shown around the distillery's own bottling plant. Glen Grant is one of the few whisky distilleries in Scotland to bottle on-site so this is an experience not to be missed. Afterwards sample a dram of Glen Grant's smooth single malt before you take a wander around the gorgeous Victorian gardens, which were created by James Grant after the founding of the distillery.

OPENING TIMES

Open 7 days a week though opening times vary.

SAMPLE

- Glen Grant 10 Year Old
- Glen Grant 16 Year Old
- Glen Grant The Major's Reserve

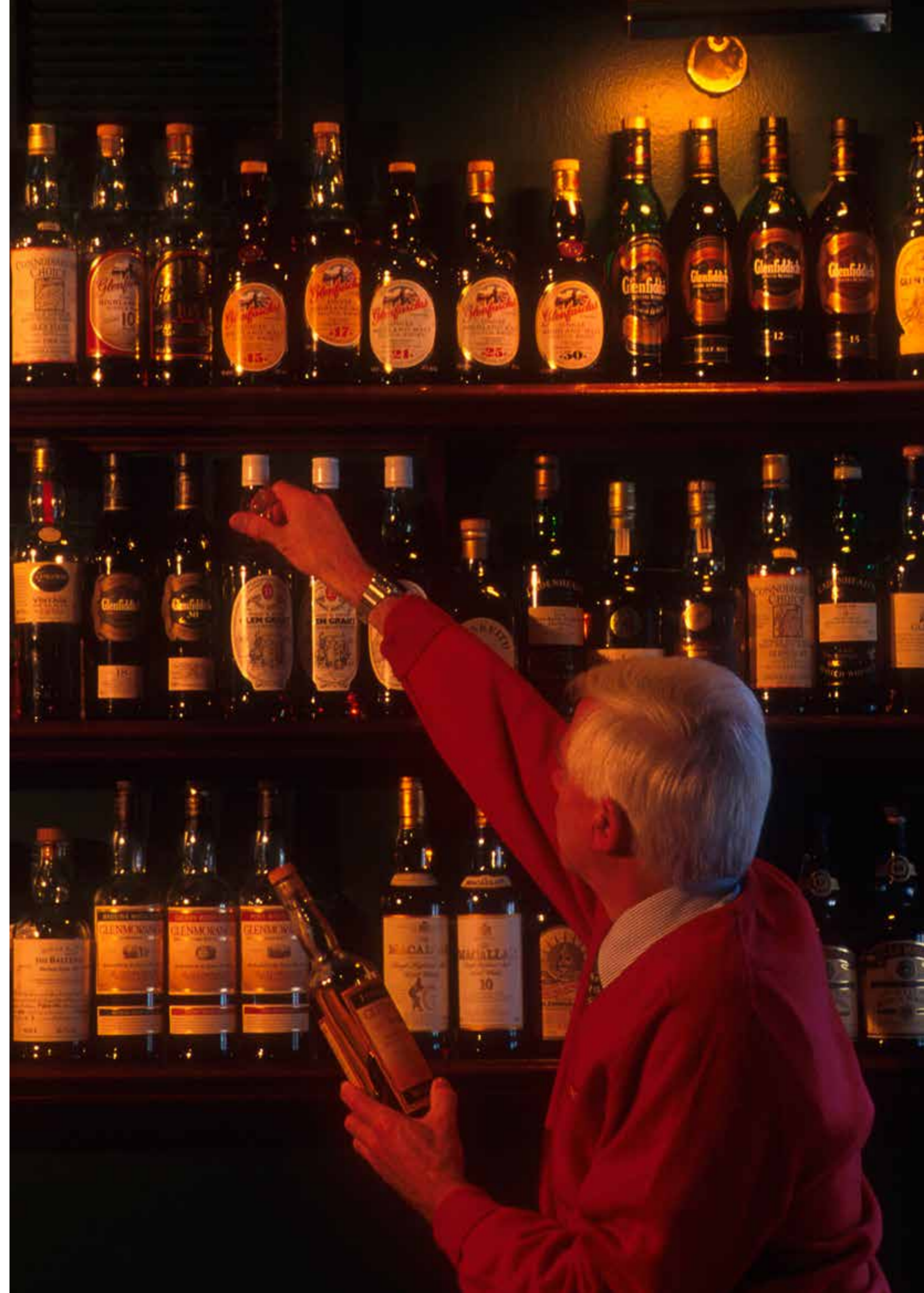
WHERE TO BUY

Most major retailers and online.

OTHER NEARBY ATTRACTIONS

- *Speyside Cooperage*
- *Balvenie Castle*
- *Knockando Woolmill*
- *Cardhu Distillery*
- *Macallan Distillery*
- *Craigellachie Hotel whisky bar The Quaich*

The barman selects Glen Grant from a selection at the Quaich Bar, Craigellachie Hotel





Glenlossie Distillery

LOCATION

Near Elgin, Moray, the Highlands.

OVERVIEW

Founded in 1876, Glenlossie Distillery's single malts are highly prized by blenders and were used as part of Haig's blends. To this day demand is so high amongst blenders that less than 1 percent of the distillery's whisky is released as single malts.

Not open to the public.

SAMPLE

- Inchgower 13 Year Old
- Inchgower 14 Year Old - Flora and Fauna
- Inchgower 25 Year Old

WHERE TO BUY

Online.

OTHER NEARBY ATTRACTIONS

- *Benromach Distillery*
- *Glen Moray Distillery, Elgin*
- *Dallas Dhu Historic Distillery, Forres*
- *Johnstons of Elgin Cashmere Centre*
- *Elgin Cathedral, Elgin*

Inchgower Distillery

LOCATION

Buckie, Moray, the Highlands.

OVERVIEW

The Inchgower Distillery lies in Banffshire, not far from the mouth of the River Spey. Inchgower Scotch Whisky is a component of the Bell's blend and as much as 99% of the whisky made at the distillery is used in blends. There have been very few official releases, though independent bottlings are available.

Not open to the public.

SAMPLE

- Inchgower 13 Year Old
- Inchgower 14 Year Old Flora and Fauna
- Inchgower 25 Year Old

WHERE TO BUY

Online.

OTHER NEARBY ATTRACTIONS

- *Glenglassaugh Distillery*
- *Strathisla Distillery*
- *The Scottish Dolphin Centre*
- *Gordon Castle Walled Centre*

Kininvie Distillery

LOCATION

Dufftown, Moray, the Highlands.

OVERVIEW

Kininvie Distillery has been a well-kept secret since it opened in 1990 behind the Glenfiddich and Balvenie distilleries. First used to produce malts primarily for use in William Grant & Sons blended whiskies, Kininvie has now come into its own as one of the three malts used in the popular Monkey Shoulder blended whisky along with Grant & Sons stable mates Glenfiddich and Balvenie malts. In the last decade, Grants have released limited edition single malts from the distillery too.

Not open to the public.

SAMPLE

- Monkey Shoulder (blend)
- Hazlewood 105
- Hazlewood Reserve

WHERE TO BUY

Monkey Shoulder is available at most major retailers and online. The distillery's single malts are rare collector's items and as such can be expensive to buy. They are available from selected specialist retailers and online.

OTHER NEARBY ATTRACTIONS

- *Benromach Distillery*
- *Cragganmore Distillery*
- *Dallas Dhu Historic Distillery*
- *Glenfarclas Distillery*
- *Glenfiddich Distillery*
- *RSPB Osprey Centre, Loch Garten*
- *Speyside Cooperage*
- *Strathisla Distillery*

Speyside Cooperage



Knockdhu Distillery

Tours available

LOCATION

Knock, near Keith, Moray, the Highlands.

HOW TO GET THERE

Knock is a rural community. From Keith, take the A95 to Banff. After 8 miles, the road to Knock is signposted where you should turn right. The distillery is less than a mile down the road and on the left as you enter the hamlet.

OVERVIEW

The planets appeared to align when Knockdhu Distillery came in existence. In 1892, its founder John Morrison bought the Knock estate, land which was full of peat and arable ground ideal for growing barley. The Great North of Scotland railway also ran nearby.

When pure water springs were found, there was only one thing for it – to build a distillery which opened its doors in 1894.

All the single malt whisky produced at the distillery was rechristened anCnoc in 1993 (pronounced ‘a-nock’) – the Gaelic for hill and the name of the village the distillery was built in - to avoid confusion with its distant Speyside cousin, Knockando.

Although the single malt in the bottles hasn’t changed since the first casks were matured back at the end of the 19th century, anCnoc is now perhaps most easily recognisable thanks to collaboration with Peter Arkle, a Scots-born illustrator, who designed the packaging for a series of limited edition whiskies in 2012. The result was a striking, modern take on the whisky-making process inspired by Arkle’s visit to the Knockdhu distillery.

OPENING TIMES

By appointment.

SAMPLE

- anCnoc 12 Year old
- anCnoc 16 Year old
- anCnoc 18 Year old
- anCnoc 22 Year old
- anCnoc 35 Year old
- anCnoc 2000

WHERE TO BUY

Available at most major retailers and online.

OTHER NEARBY ATTRACTIONS:

- *Benromach Distillery*
- *Cragganmore Distillery*
- *Dallas Dhu Historic Distillery*
- *Glenfarclas Distillery*
- *Glenfiddich Distillery*
- *RSPB Osprey Centre, Loch Garten*
- *Speyside Cooperage*
- *Strathisla Distillery*

Knockando Distillery

LOCATION

Knockando, Moray, the Highlands.

OVERVIEW

Bearing the same name of the village it rests in, Knockando (from the Gaelic ‘Cnoc-an-dhu’ meaning little black hill) is unlike many Speyside distilleries in terms of the single malts it produces. Like many of the classic Speyside malts, Knockando’s 12 Year Old single malt is delicate and fruity. Unusual for the region, the distillery also gently peats some of the malted barley it uses in its whisky but not so much that it would overpower the other notes on the palate.

Built in 1898, the distillery bears many of the famed hallmarks of a Scottish distillery. From its tell-tale pagoda roofs to its forest setting on a bend on the River Spey, Knockando conjures the magic and mystery of the whisky distillation process.

Given its late establishment date compared to some of Scotland’s most historic distilleries, it became something of a pioneer as the first in Scotland to be built with electric lighting. Long since pulled up, it was also once linked directly to the Great North of Scotland railway, making it easy for its whisky to be transported around Scotland, the rest of the UK and the world.

Not open to the public

SAMPLE

- Knockando 12 Year Old
- Knockando 15 Year Old
- Knockando 18 Year Old
- Knockando 21 Year Old

WHERE TO BUY

Major online retailers and specialist whisky shops.

OTHER NEARBY ATTRACTIONS

- *Benromach Distillery*
- *Cragganmore Distillery*
- *Dallas Dhu Historic Distillery*
- *Glenfarclas Distillery*
- *Glenfiddich Distillery*
- *RSPB Osprey Centre, Loch Garten*
- *Speyside Cooperage*
- *Strathisla Distillery*

The pot stills at Knockdhu Distillery

Linkwood Distillery

LOCATION

Elgin, Moray, the Highlands.

OVERVIEW

The Linkwood Distillery is located in the northerly town of Elgin, drawing its water from the springs of Millbuies Loch. Beside the distillery is a reservoir which is home to a breathtaking variety of local wildlife including swans, which feature on the label of the Linkwood 12 Year Old.

There have been quite a number of independent bottlings from Linkwood in recent years, including a few special editions. Only 2 percent of the malt produced at Linkwood is sold as single malt, the remainder goes into popular blends such as Bells, White Horse and Haig.

Not open to the public.

SAMPLE

- Linkwood 12 Year Old Flora and Fauna
- Linkwood 15 Year Old

WHERE TO BUY

Online.

OTHER NEARBY ATTRACTIONS

- *Glen Grant Distillery*
- *Glen Moray Distillery*
- *Benromach Distillery*
- *Macallan Distillery*
- *Elgin Cathedral*
- *Elgin Museum*

Longmorn Distillery

LOCATION

Elgin, Moray, the Highlands.

OVERVIEW

Longmorn Distillery is quietly situated in the town of Elgin in Moray, in the heart of the whisky-making region of Speyside. It is surrounded by many other top whisky producers, including the BenRiach, just down the road.

The distillery has overcome a few setbacks, including the whisky industry's economic troubles at the end of the 19th century. The founder, John Duff, was forced to

sell the business during this time. The distillery reopened under the new ownership of James Grant (owner of the Glen Grant distillery) and Longmorn continued to produce whisky again in the early 1970s, as the business was merged together with the Glen Grant and Glenlivet distilleries.

Not open to the public.

SAMPLE

- Longmorn 16 Year Old
- Longmorn 20 Year Old
- Longmorn 23 Year Old

WHERE TO BUY

Online

OTHER NEARBY ATTRACTIONS:

- *Elgin Cathedral*
- *Johnston's of Elgin Cashmere Visitor Centre*
- *Spynie Palace*
- *Elgin Museum*
- *Glen Moray Distillery*



Macallan Distillery

Tours available

LOCATION

Near Aberlour., Moray, the Highlands.

HOW TO GET THERE

The Macallan Estate is found just north of Aberlour, in Aberdeenshire, and it is about one and a half hour's drive from Aberdeen. The River Spey borders the estate to the south and south east.

OVERVIEW

The Macallan Distillery was founded in 1824 by Alexander Reid, a barley farmer and school teacher. Since then, the distillery has become renowned for producing some of Scotland's finest single malts, using the barley from the surrounding farms.

The Macallan proudly associates its distinct taste to the 'curiously small spirit stills' - the smallest to be found in Speyside. Their unique size and shape gives the spirit maximum contact with the copper which in turn helps to produce full-bodied flavours. See if you can taste the difference with a dram in the visitor centre.

For those who wish to understand the creation of the Macallan in greater depth, there is a Precious Tour which explores the distillation process more closely and ends with a tutored nosing and tasting in the nosing room.

Work is currently underway for a brand new distillery to open in 2017.

OPENING TIMES

Open all year round, but times vary throughout the year.

SAMPLE

- The Macallan Ruby
- The Macallan Sienna
- The Macallan 10 Year Old Sherry Oak
- The Macallan Amber
- The Macallan Gold

WHERE TO BUY

Major retailers and online.

OTHER NEARBY ATTRACTIONS

- *Aberlour Distillery*
- *Glen Grant Distillery*
- *Balvenie Distillery*
- *Glenfiddich Distillery*
- *Cardhu Distillery*
- *RSPB Osprey Centre, Loch Garten*
- *Speyside Cooperage*

Spynie Palace

Bonded warehouse at the Macallan Distillery



Mannochmore Distillery

LOCATION

Near Elgin, Moray, the Highlands.

OVERVIEW

Built in 1971, just behind Glenlossie Distillery, the majority of Mannochmore Distillery's whisky goes into blends, though a few rare bottles of single malt are available.

Not open to the public.

SAMPLE

- Mannochmore 12 Year Old, Flora and Fauna

WHERE TO BUY

Online.

OTHER NEARBY ATTRACTIONS

- *Benromach Distillery, Forres*
- *Glen Moray Distillery, Elgin*
- *Dallas Dhu Historic Distillery, Forres*
- *Johnstons of Elgin Cashmere Centre*
- *Elgin Cathedral, Elgin*

Miltonduff Distillery

LOCATION

Elgin, Moray, the Highlands.

OVERVIEW

Founded in 1824, the majority of Miltonduff Distillery's single malt whisky goes into the Chivas Regal blends, through a few rare bottles of single malt are available to order online.

Not open to the public.

SAMPLE

- Chivas Regal blended whisky

WHERE TO BUY

Most major retailers and online.

OTHER NEARBY ATTRACTIONS

- *Benromach Distillery*
- *Glen Moray Distillery, Elgin*
- *Dallas Dhu Historic Distillery, Forres*
- *Johnstons of Elgin Cashmere Centre*
- *Elgin Cathedral, Elgin*

Mortlach Distillery

LOCATION

Dufftown, Moray, the Highlands.

OVERVIEW

Founded in 1824, the majority of Mortlach Distillery's whisky goes into the Johnnie Walker blend, though a few rare bottles of single malt are available to order online.

Not open to the public.

SAMPLE

- Johnnie Walker

WHERE TO BUY

Most major retailers and online.

OTHER NEARBY ATTRACTIONS

- *Glenfiddich Distillery, Dufftown*
- *The Balvenie Distillery, Dufftown*
- *The Whisky Line, Keith and Dufftown Railway*

Roseisle Distillery

LOCATION

Near Elgin, Moray, the Highlands.

OVERVIEW

Built in 2009, Roseisle Distillery is the largest malt whisky distillery in Scotland with a production capacity of 10 million litres of spirit per annum. Its single malts are used in blends, such as Johnnie Walker and Buchanan.

Not open to the public.

SAMPLE

- Johnnie Walker blended whisky
- Buchanan blended whisky

WHERE TO BUY

Most major retailers and online.

OTHER NEARBY ATTRACTIONS

- *Benromach Distillery, Forres*
- *Dallas Dhu Historic Distillery*
- *Brodie Castle*
- *Elgin Cathedral*
- *Johnstons of Elgin Cashmere Centre*

Brodie Castle





Speyburn Distillery

LOCATION

Rothes, Moray, the Highlands.

OVERVIEW

Speyburn single malt was first distilled on 15 December 1897, the diamond jubilee year of Queen Victoria. To make sure the whisky was distilled in this momentous year, men worked through a heavy snow storm in a windowless still house. They succeeded but only managed to bond one butt cask of 1897 Speyburn.

Hardly changing in appearance over its 100 year existence, the distillery has become one of the most photographed in Scotland. Built in a compact layout due to the surrounding geography, architect Charles Doig designed the distillery with emphasis on height rather than width. As such, it required using large 'drum maltings' as opposed to the traditional floors found at distilleries like Laphroaig and Springbank.

Although one of the five main Speyside distilleries in the town of Rothes, Speyburn label their packaging as Highland single malt Scotch whisky. It even won Best Highland Malt Whisky at the 2012 World Whiskies Awards.

Not open to the public.

SAMPLE

- Speyburn 10 Year Old
- Speyburn 25 Year Old
- Speyburn Bradan Orach

WHERE TO BUY

Major retailers and online.

OTHER NEARBY ATTRACTIONS

- *Benromach Distillery*
- *Cragganmore Distillery*
- *Dallas Dhu Historic Distillery*
- *Glenfarclas Distillery*
- *Glenfiddich Distillery*
- *RSPB Osprey Centre, Loch Garten*
- *Speyside Cooperage*
- *Strathisla Distillery*

Speyside Distillery

LOCATION

Dufftown, Moray, the Highlands.

OVERVIEW

Billing itself as a 'boutique whisky distillery', Speyside is one of the region's newest distilleries to open. The buildings that now house the distillery were once a barley mill and croft dating back to the 1700s which was closed in 1965. There was already a strong whisky heritage nearby with the new distillery sitting opposite

the site of the former Drumguish Distillery which fell in disuse in 1911.

Although founded in the early 1960s, the Speyside Distillery didn't actually start producing its first new make spirit until Christmas Day 1990, following a lengthy 25-year period of conversion. A small-scale producer with just two stills, the single malts produced by the distillery's master craftsmen are very light and delicate, making them a very approachable introduction to Speyside whiskies.

Not open to the public.

SAMPLE

- Spey 12 Year Old
- Spey 18 Year Old
- Spey Royal Choice
- Spey Chairman's Choice
- Spey Drumguish

WHERE TO BUY

Available online from merchants and specialist whisky shops.

OTHER NEARBY ATTRACTIONS

- *The Dufftown Whisky Musum*
- *'The Whisky Line'*
- *Strathisla Distillery*
- *Balvenie Distillery*



Strathisla Distillery

Tours available

LOCATION

Keith, Moray, the Highlands.

HOW TO GET HERE

Strathisla can be found in the small town of Keith in Moray. It's about an hour's drive from Aberdeen and you can also get here by catching the train to Keith Railway Station from Aberdeen or Inverness.

OVERVIEW

Step inside the Strathisla Distillery, one of the oldest distilleries in Scotland, and you'll find a complex whisky with many thrilling tales to tell. Strathisla draws its waters from

the mysterious Broomhill Spring. According to legend, Kelpies - the waterhorse beings from Scottish folklore - haunt these waters at night.

Formerly known as the Milton Distillery, the Strathisla is known for its distinctive pagodas and cobbled courtyard. It is now owned by Chivas Brothers, who nurture the single malt as one of the key ingredients in their blended whiskies.

Discover its true character at the Ultimate Strathisla Experience Tour, where you'll be treated to a selection of expressions. Or, why not enjoy the Straight from the Cask experience, where you'll get the chance to sip on some Limited Edition drams?

OPENING TIMES

Opening times vary – please see website.

SAMPLE

- Strathisla 12 Year Old
- Chivas Regal 12 Year Old
- Royal Salute 21 Year Old

WHERE TO BUY

You can purchase Strathisla online and at most major retailers and specialist shops.

OTHER NEARBY ATTRACTIONS

- *Dean's of Huntly Bistro*
- *Huntly Herbs*
- *The Whisky Shop, Dufftown*
- *Teapots Restaurant*
- *Glenfiddich Distillery*
- *Speyside Cooperage*

Strathmill Distillery

LOCATION

Keith, Moray, the Highlands.

OVERVIEW

Strathmill Distillery was traditionally a flour mill, and was converted into a whisky distillery in 1891. Formerly known as the Glenisla-Glenlivet, the distillery became the Strathisla in 1895 when gin producers A & A Gilbey bought the distillery.

Independent releases of the Strathmill are fairly rare and it is not particularly known for its single malt. It has produced whisky for blends and is notable component in Old Master, Dunhill, and most significantly, J&B.

Not open to the public.

SAMPLE

- Strathmill 12 Year Old
- Strathmill 1999 Connoisseur's Choice
- Strathmill 15 Year Old Manager's Dram
- J&B blended whisky

WHERE TO BUY

Online.

OTHER NEARBY ATTRACTIONS

- *Keith Kilt and Textile Centre*
- *Keith Golf Club*
- *Strathisla Distillery*

Strathisla Distillery

Tamdhu Distillery

LOCATION

Knockando, Moray, the Highlands.

OVERVIEW

Tamdhu Distillery was a late addition to Speyside's burgeoning portfolio of whisky producers, first opening its doors in 1897. Coming from the Gaelic for 'little dark hill', it is one of two distilleries in the small village of Knockando, the other bearing the village name.

Instilling the pioneering spirit of the industrial age, the founders of Tamdhu wanted to reflect the innovation of the 19th century. Prolific distillery designer Charles Doig was employed to draw up blueprints, incorporating some unique and ingenious design features, including specially-designed kilns to prevent heat loss and a water wheel beneath the flooring for optimum performance.

Despite much fanfare about its design, Tamdhu has had a fairly unassuming history after changing hands several times and long bouts of lying dormant. In 2010, it finally closed its doors. But not for long. In 2011, Ian Macleod Distillers, a family-owned enterprise, took up ownership and put the distillery back into operation in 2013 to produce single malt whisky as it did when

it first opened – by continuing to use its on-site maltings and the maintaining tradition of maturation exclusively in sherry casks.

While continuing to release single malt bottlings, some of the spirit produced is used a component in Famous Grouse blended Scotch whisky.

Not open to the public.

SAMPLE

- Tamdhu 10 Year Old
- Tamdhu 10 Year Old Limited Edition

WHERE TO BUY

Available from the online distillery shop and most major online retailers and specialist whisky shops. Famous Grouse is widely available.

OTHER NEARBY ATTRACTIONS

- *Benromach Distillery*
- *Cragganmore Distillery*
- *Glenfiddich Distillery*
- *Speyside Cooperage*
- *RSPB Osprey Centre, Loch Garten*

Tamnavulin Distillery

LOCATION

Ballindalloch, Moray, the Highlands.

OVERVIEW

One of Scotland's newer distilleries, Tamnavulin was built in the 1960s and is a modern and efficient distillery, producing plentiful litres of whisky every year. It takes its name from the Gaelic for 'the mill on the hill', and the mill next door is thought to have been used by shepherds for making wool in the past. The River Livet bubbles away nearby, in the direction of the Grampian Mountains and Moray. This distillery blends into a truly stunning area of Scotland, on the northerly edge of the Cairngorms National Park.

The distillery has six stills that have mainly produced malt whisky for blends including Mackinlay, Whyte & Mackay and Crawfords.

Not open to the public.

SAMPLE

- Tamnavulin 12 Year Old
- Tamnavulin 25 Year Old

WHERE TO BUY

Whisky shops or online.

OTHER NEARBY ATTRACTIONS

- *Wildlife safaris with Glenlivet Wildlife*
- *Walks and cycle paths at the Glenlivet Estate*
- *Cragganmore Distillery*
- *Glenfarclas Distillery*

A glass of whisky





The Glenlivet Distillery

Tours available

LOCATION

Ballindalloch, Moray, the Highlands.

HOW TO GET THERE

Travel by car along the A95 before turning onto the B9008.

OVERVIEW

With a free exhibit, coffee shop, fill your own bottle experience, distillery tours, tastings and a well-stocked gift shop, it would be easy to lose track of time at The Glenlivet Distillery. Tucked away deep in the heart of Speyside, The Glenlivet Distillery produces one of the world's most recognisable single malts.

Founded in 1824 by George Smith, Glenlivet Distillery quickly became so famous for its high quality whisky that other distilleries began to adopt the Glenlivet name. In the 1880s the Smith family officially won the right to the name and to

this day only single malt produced by the distillery can be called 'The Glenlivet'.

Discover more about the distillery and the whisky making process on a FREE Distillery Tour, which includes a 45 minute tour of the distillery, a visit to one of the bonded warehouses and a complementary dram of The Glenlivet.

For a truly in-depth experience, book the Spirit of Malt Tour (£30). As well as a guided tour, you'll also be given the opportunity to visit Josie's Well, the natural spring that supplies fresh water for The Glenlivet, as well as a traditional dunnage warehouse, where you can sample an aged dram drawn straight from the cask. Afterwards, sit back and relax as your guide takes you on a tutored tasting of seven expressions. Experience the wide spectrum of The Glenlivet range and see if you can find a new favourite.

OPENING TIMES

31 March – 31 October, tour times vary.

SAMPLE

- The Glenlivet 12 Year Old
- The Glenlivet 15 Year Old
- The Glenlivet 18 Year Old

WHERE TO BUY

Most major retailers and online.

OTHER NEARBY ATTRACTIONS

- *Glenfarclas Distillery, Ballindalloch*
- *Cragganmore Distillery, Ballindalloch*
- *Ballindalloch Castle, Ballindalloch*
- *Knockando Woolmill, Knockando*
- *Balvenie Castle, Dufftown*

Craigellachie

Tomintoul Distillery

LOCATION

Ballindalloch, Moray, the Highlands.

OVERVIEW

Founded next to the Ballantruan spring in 1964, this Tomintoul Distillery uses time-honoured techniques to produce malt whisky. The distillery lies within the Glenlivet Estate in unspoilt, picturesque surroundings which is also home to some rare flora and fauna including golden eagles, mountain hares, wild cats, black grouse, ptarmigan, pine martens and red squirrels.

The Master Distiller, Robert Fleming, is Glenlivet Estate born-and-bred and hails from a family who have been making whisky in the region for four generations. Known as 'the gentle dram', the spirit produced is distinctly smooth and mellow.

Not open to the public.

SAMPLE

- Tomintoul 10 Year Old
- Tomintoul 12 Year Old
- Tomintoul 12 Year Old Portwood Cask
- Tomintoul 14 Year Old
- Tomintoul 16 Year Old
- Tomintoul 21 Year Old
- Tomintoul 33 Year Old

WHERE TO BUY

Available to buy from a number of retailers across the UK.

OTHER WHISKY ATTRACTIONS

- *Glenlivet Distillery*
- *Cragganmore Distillery*
- *Aberlour Distillery*
- *Ballindalloch Castle*
- *Rothiemurchus Estate*

Tormore Distillery

LOCATION

Grantown on Spey, Moray, the Highlands.

OVERVIEW

Founded in 1960, Tormore Distillery was the first Scottish distillery to be built from scratch in the 20th century. Although the distillery is not open to the public its whisky is used in Ballantine's blends and some bottles of single malt are available.

Not open to the public.

SAMPLE

- Ballantine's blended whisky
- Tormore 14 Year Old
- Tormore 16 Year Old

WHERE TO BUY

Specialist retailers and online.

OTHER NEARBY ATTRACTIONS

- *Macallan Distillery, Craigellachie*
- *Glenfarclas Distillery, Ballindalloch*
- *Grantown Museum, Grantown on Spey*
- *The Speyside Centre, Dulnain Bridge*
- *Loch Garten Osprey Centre, Nethybridge*



Be sure to check out our guides for the other **four regions**.

Driving around Scotland is a great way to see more of the country but before you head out exploring by car, there are a few rules and regulations you should be aware of: www.visitscotland.com/travel/information/driving-in-scotland

Drink responsibly: find useful information about drinking: www.drinksmarter.org